



Mid-Coast Water Planning Partnership

Mid-Coast Water Planning Partnership Kickoff Meeting
September 29, 2016, 4:00 – 7:00 pm
Newport City Council Chambers

AGENDA

Time	Topic	Lead
4:00 pm	Welcome: <ul style="list-style-type: none">• Meeting Objectives• Overview of goals and planning process	Conveners: Timothy Gross, City of Newport and Harmony Burrigh, OWRD
4:20 pm	<ul style="list-style-type: none">• Introductions• History of Water & the Mid-Coast Timeline	Facilitators: Jeanne Nyquist and Shirlene Warnock (IGS)
4:50 pm	Water Challenges and Opportunities on the Mid-Coast <ul style="list-style-type: none">• Overview• Discussion	Timothy Gross and Facilitators
5:50 pm	Working Together <ul style="list-style-type: none">• Outline of Planning Process• Planning Partnership Structure and Participant Roles• Question and Answer Session	Facilitators
6:20 pm	*Next Steps	Facilitators
6:30 pm	Adjourn	Facilitators
6:30 - 7:00 pm	Refreshments and informal discussion	

*Participants using HWY 20 should leave by 6:30 as HWY 20 will be closed at 7:00 pm.

Stay connected - www.midcoastwaterpartners.com



Mid-Coast Water Planning Partnership

MEETING GUIDELINES

- **Focus on the future**
- Recognize that we are a system - Work in a spirit of togetherness
- Respect all viewpoints – Allow others to be heard
- Engage in collaborative discussion – Seek win-win solutions
- Strive for understanding – Ask for clarification when needed
- Be patient
- Start/stop on time
- Silence electronics
- When speaking, identify yourself and all organizations you represent
- Tangential issues will be placed in parking lot



Place-Based Integrated Water Resources Planning

Helping Oregon communities plan for their current and future water needs.



Water is important to all Oregonians. It is vital to community well-being, economic development and a healthy environment. Across Oregon, every place has its unique water challenges that, if left unaddressed, may increase in the future. The 2012 Integrated Water Resources Strategy (IWRS) recommends that the Oregon Water Resources Department (OWRD) help communities collaboratively develop solutions to address water challenges within a watershed, basin or groundwater area. Place-based planning provides an opportunity for people with an interest in water to better understand local water resources and to coordinate efforts so that they are working to achieve a shared vision of their water future.

What is place-based planning?

Place-based planning provides a framework for communities to understand and meet their water needs now and into the future. In order to accomplish this, communities will:

1. Build a collaborative and inclusive process;
2. Gather information to understand current water resources and identify gaps in knowledge;
3. Examine current and future water needs for people, the economy, and the environment;
4. Identify and prioritize strategic and integrated solutions to meet water needs;
5. Develop a local integrated water resources plan.

Why place-based planning?

Place-based planning will help foster cooperative relationships between individuals and groups that value water differently. Through a collaborative process planning groups will build upon existing knowledge, identify and fill information gaps, coordinate efforts, and explore innovative solutions to meet multiple needs. Place-based planning can help communities develop a shared understanding and vision, prioritize actions, and gather the support and resources they need to implement those actions.

Key Planning Principles

- Locally-initiated and led collaborative process
- Voluntary, non-regulatory approach
- Includes a balanced representation of water interests
- Conducted in partnership with the state
- Addresses instream and out-of-stream needs
- Looks at water quantity, quality and ecosystem needs
- Open and transparent process that fosters public participation
- Builds on and integrates existing studies and plans
- Does not infringe on existing water rights
- Adheres to IWRS principles and state laws

Place-based planning pilot areas

In 2015, the Legislature provided OWRD with resources to pilot place-based planning, including funding to assist communities with planning through grants. After soliciting and evaluating 16 letters of interest from around the state, grants were awarded to organizations in four areas: the John Day Partnership in the Lower John Day Sub-Basin, Union County in the Upper Grande Ronde Sub-Basin, the Harney County Watershed Council in the Malheur Lake Basin, and the City of Newport in the Mid-Coast Basin.

During the pilot phase, each of these places will partner with the Department to test a set of [draft planning guidelines](#), identify best practices, and improve the planning process. The first step for the pilots is to bring together interested partners in a collaborative, locally-led process that is open to the public.

See page two for more information on the pilot areas.

Learn More!

- Visit the web page: <http://bit.ly/owrdplanning>
- Contact Planning Coordinators Harmony Burrigh (503-986-0913) or Steven Parrett (503-986-0914)
- Send an e-mail inquiry to: placebasedplanning@wrd.state.or.us

Summary of Place-Based Planning Pilot Areas

Lower John Day Sub-Basin John Day Partnership Funding Approved: \$190,000

The Lower John Day Sub-Basin supports a robust agriculture-based economy and important wild anadromous fish habitat, both of which depend upon reliable water resources. The lower river and its tributaries rely heavily on the watershed's ability to capture, store, and slowly release 8-20 inches of precipitation in a given year. Several years of drought and the potential impacts of climate change further threaten limited supplies.

Through this place-based planning effort the John Day Partnership and other basin interests will identify solutions to efficiently develop, conserve, store, and utilize water in the region to meet instream and out-of-stream needs. The Partnership is also completing a basin-wide Strategic Action Plan funded by the Oregon Watershed Enhancement Board, offering the the opportunity to explore how to integrate these complementary planning processes.

Upper Grande Ronde Sub-Basin Union County Funding Approved: \$197,000

The Upper Grande Ronde Sub-Basin is a vital ecosystem that supports ranchers, farmers, and urban residents as well as an array of fish and wildlife species. Water supply shortages for instream and out-of-stream uses currently exist in this sub-basin and may be intensified by climate change and increases in future demand.

Through this place-based planning effort Union County will bring together a broad group of partners to understand where water needs are not being met and develop a focused plan that will help meet current and future needs. While there is a significant body of knowledge on water quality, quantity, and ecological demands in the watershed, this presents an opportunity to integrate that information. This effort will build on current collaborative work to identify and prioritize innovative solutions to address current and future water challenges.

Mid-Coast Basin Mid-Coast Planning Group Funding Approved: \$135,000

The Mid-Coast Basin is characterized by smaller watersheds that are distributed along the coast line. These coastal watersheds support out-of-stream needs for municipal drinking water, agricultural and industrial use, and instream needs for various aquatic species, water-based tourism and commercial, recreational, and tribal fisheries.

Through this place-based planning effort the City of Newport and the Mid-Coast Planning Group will initiate regional planning among coastal water interests. This collaborative group will address current and future water challenges, looking at quantity, quality and ecosystem needs while identifying ways to increase resilience. This effort may serve as a model for communities facing similar water challenges up and down the Oregon coast.



Malheur Lake Basin Harney County Watershed Council Funding Approved: \$135,000

The Malheur Lake Basin is a large basin that supports hay and cattle industries as well as a dynamic high desert ecosystem. Recent drought years have contributed to declining groundwater levels in several areas of the basin and designation of a "groundwater area of concern." The citizens of Harney County have a history of successful collaborative planning efforts to address complex natural resources issues. Place-based planning presents an opportunity to develop a long-term water plan using a collaborative approach.

Through this place-based planning effort the Harney County Watershed Council will bring together a broad group of partners to share their collective wisdom and develop innovative, community supported solutions that balance water supply and demand in a more integrated manner.

For additional information about the Integrated Water Resources Strategy sign up for our mailing list:
<http://listsmart.osl.state.or.us/mailman/listinfo/iwrs>



Mid-Coast Water Planning Partnership



The **Mid-Coast Water Planning Partnership** will examine water supply and demand needs in Oregon’s Mid-Coast region. Our regional water suppliers include small cities, unincorporated community water districts, tribal communities, and commercial industry near the Pacific Ocean. Our area is home to a vibrant fishing, tourist, and forest products economy, and an ecosystem that supports diverse populations of fish, wildlife, and birds. *Abundant, clean water resources are needed to support people, the economy and the environment.* You are invited join the Partnership and be a part of this important conversation.

Our water challenges

The need for reliable, quality water supplies is critical. The Mid-Coast Region has unique water challenges that, if left unaddressed, will intensify over time:

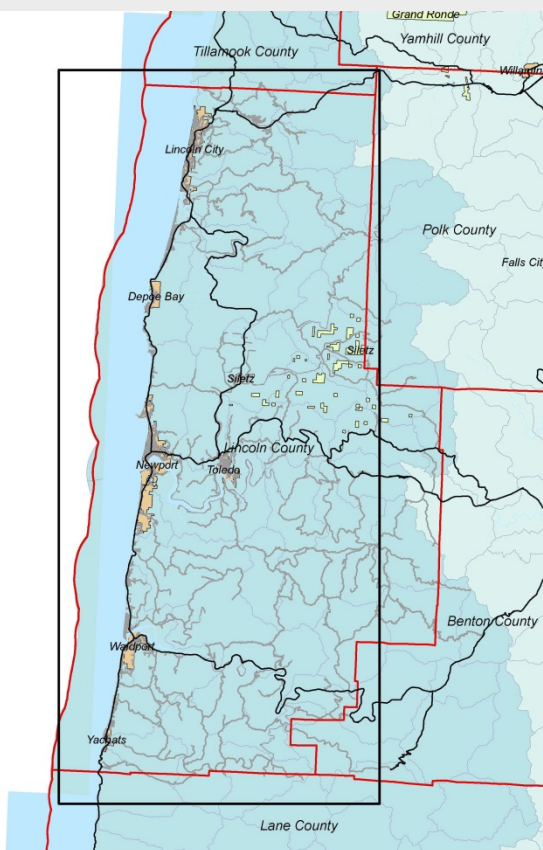
- Over the last few years some water suppliers have struggled to meet existing demands. Moreover, a 2008 study found that, given current supplies and infrastructure, several water suppliers could be unable to meet demand by as soon as 2020.
- Low summer stream flow and limited water storage create pressures to meet the needs of communities for drinking water while maintaining stream flows critical for fish, recreation and industry.
- Many of our communities and their water systems are vulnerable to the impacts of drought, earthquakes and tsunamis and are not prepared to respond in the event of a natural catastrophe.

Defining our water future

These challenges require a coordinated approach since no one entity can address them alone. In June 2016 the City of Newport received a grant from the Oregon Water Resources Department (OWRD) to convene a collaborative, integrated water planning effort. This presents a timely opportunity to be proactive about understanding and meeting our current and future water needs.

Over the next three years, the Partnership may explore strategies to:

- Replace aging infrastructure, improve conservation, enhance regional water supply options, and more effectively share water between different uses and users.
- Relieve late season pressure on rivers, streams and tributaries while meeting the water needs for coastal communities and industries.
- Create redundancies in our system so we are more resilient to drought, storms and other natural vulnerabilities.
- Create a learning and action network for small water providers who are most vulnerable to environmental and regulatory challenges.



Mid-Coast Region

Join the conversation - help us define our water future

Kick-off Meeting: Wednesday, September 21, 2016 from 4-7pm at
 Newport City Council Chambers – RSVP at: <http://bit.ly/mwpprsvp>
 Mailing List: <http://bit.ly/mwpplist>
 Website: www.midcoastwaterpartners.com

More information about the Mid-Coast Water Planning Partnership

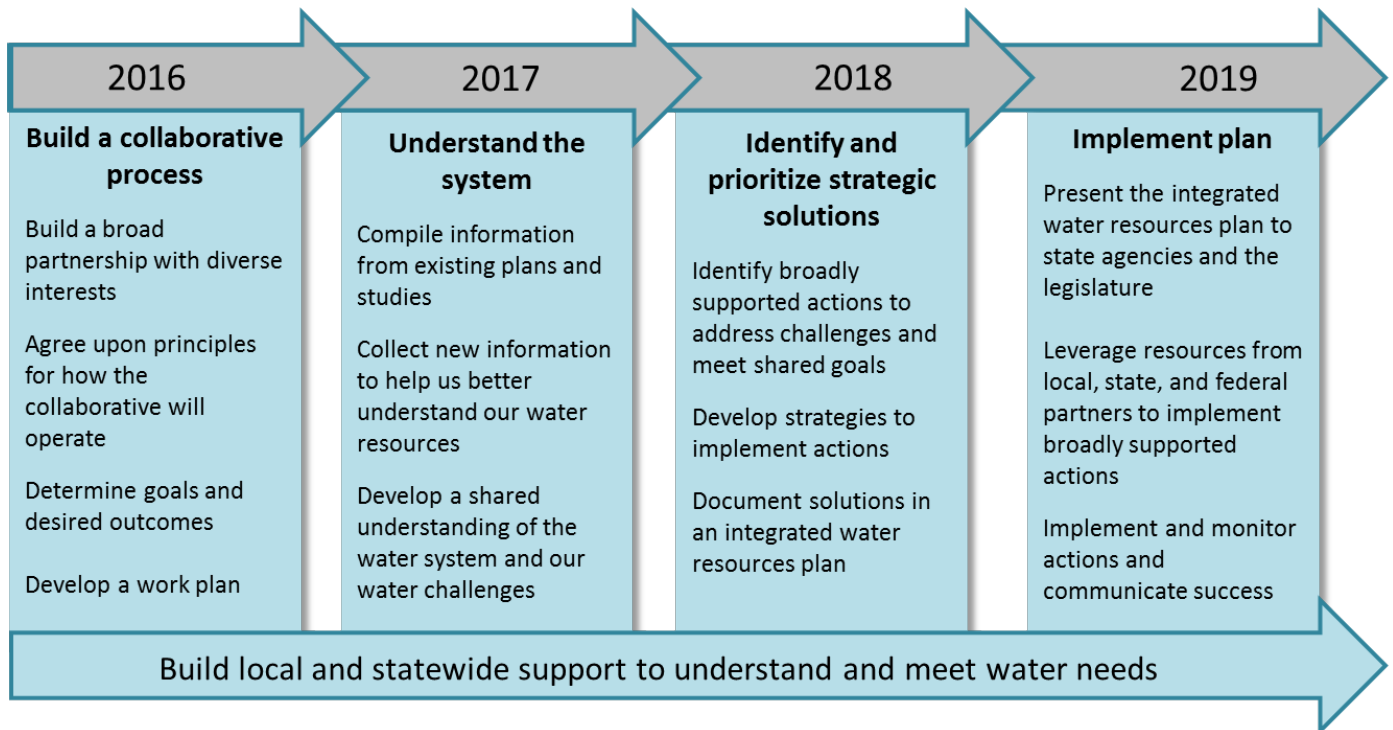
A new approach

The Mid-Coast Region is one of four areas that is piloting a new approach to water planning with the Oregon Water Resources Department. This approach, which was recommended in Oregon's [Integrated Water Resources Strategy](#), encourages integrated planning at larger scales and gives communities a greater voice in determining their water future. During the pilot phase local groups will partner with state agencies to test a set of [draft planning guidelines](#), identify best practices, and improve the process. In addition to providing a road map for the Mid-Coast, our local plan will inform future updates to Oregon's statewide strategy. This is our opportunity to chart a new path forward for our community and the state.

The benefits of Partnership

- Develop a common understanding of our water issues through discussion, sharing of knowledge, and examination of best practices
- Coordinate current and future information gathering and data collection efforts
- Develop a shared vision for our water future
- Build cooperative relationships and foster networking among diverse water interests
- Create a forum to explore innovative, out-of-the box solution to collective problems
- Coordinate and leverage local and statewide resources to achieve the best results for our region

Planning Timeline and Actions



– Contact the Conveners –

Timothy Gross
 City of Newport
 Public Works Director/City Engineer
t.gross@newportoregon.gov
 541-574-3369

Harmony Burrigh
 Oregon Water Resources Department
 Planning Coordinator
harmony.s.burrigh@wrdd.state.or.us
 541-846-8863



Mid-Coast Water Planning Partnership

Welcome to the Partnership

Why we are here: The Mid-Coast has unique water challenges that, if left unaddressed, will intensify. The Mid-Coast Water Planning Partnership is being formed to undertake a collaborative 'Place-Based Planning' process that will engage us all in developing an action plan to address our water needs.

Background: What is Place Based Planning?

In 2012 the Oregon Water Resources Commission developed an Integrated Water Resources Strategy (IWRS) that encourages integrated planning and gives communities a greater voice in determining their water future. The Mid-Coast Region is one of four areas in the state selected to test the planning guidelines in a pilot study. The City of Newport applied for a grant to conduct a 'place-based planning process'. The grant to partially fund this effort was approved by Oregon Water Resources Department (OWRD) in June 2016. The City of Newport and OWRD are 'co-conveners' of a collaborative process that is intended to involve a broad range of interested partners in developing an action plan to meet the water needs of the Mid-Coast Region.

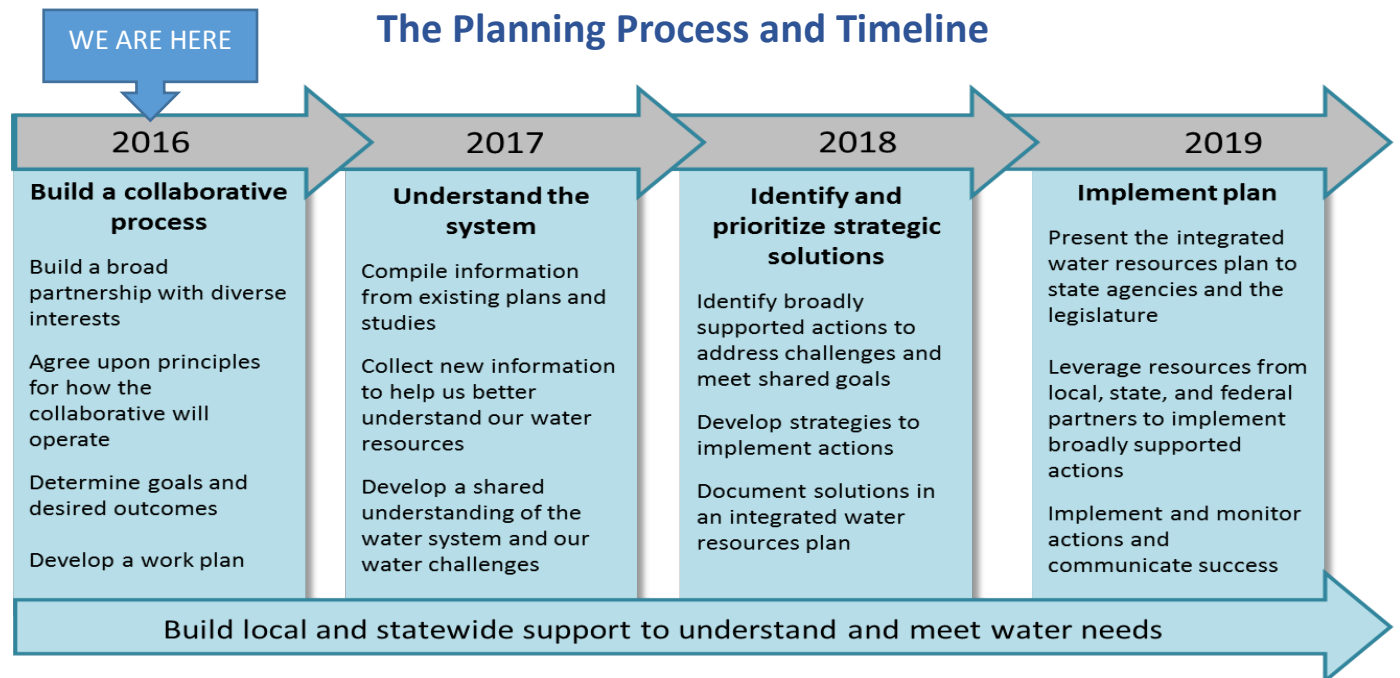
Key Planning Principles:

- Locally-initiated and led collaborative process.
- Voluntary, non-regulatory approach that cannot obligate or encumber any organization.
- Includes a balanced representation of water interests.
- Conducted in partnership with the state.
- Addresses instream and out-of-stream water needs.
- Looks at water quantity, quality and ecosystem needs in an integrated approach.
- Open and transparent process that fosters public participation.
- Builds on and integrates existing studies/plans and identifies strategies to fill information gaps.
- Does not infringe on existing water rights.
- Adheres to IWRS principles and state laws.

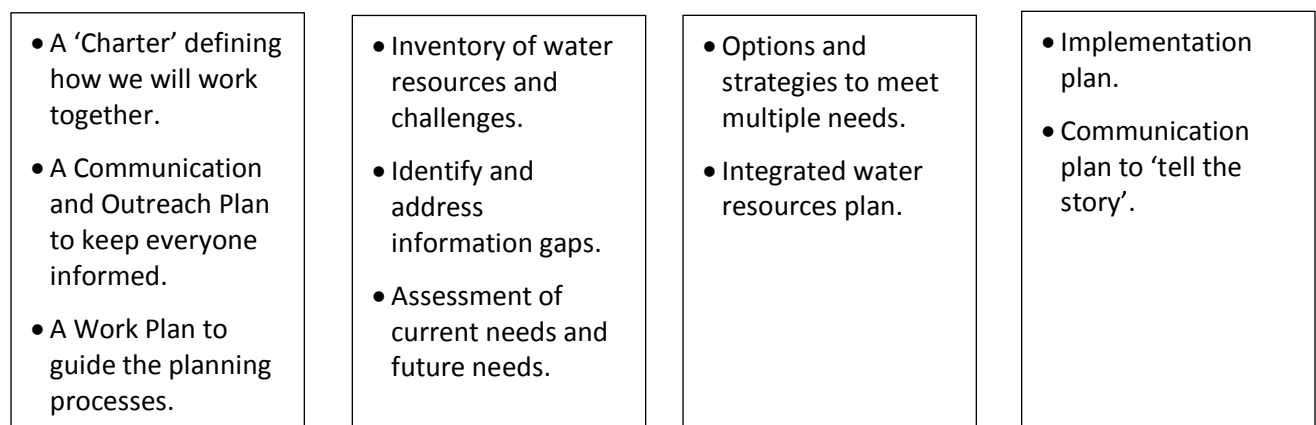
Working Together

Over the next three years, the Partnership will work together to develop a shared vision for our water future and identify and prioritize actions to achieve that water future. Some things that the Partnership may choose to focus on are how to:

- Replace aging infrastructure, improve conservation, enhance regional water supply options, and more effectively share our limited water resources.
- Relieve pressure on rivers, streams, and tributaries while meeting the water needs for coastal communities and industries.
- Understand and meet the needs of fish and wildlife.
- Create redundancies in our system so we are more resilient to drought, floods, storms, and other natural vulnerabilities.
- Create a learning and action network for small water providers who are often most vulnerable to environmental and regulatory challenges.
- Other topics and issues that are of importance to the Partnership.



O U T C O M E S



STEP ONE: BUILD A COLLABORATIVE PROCESS

FALL 2016 – SPRING 2017

STEP ONE: FALL 2016 – SPRING 2017

1A. CONVENE PARTNERS, INITIATE THE PROCESS

1B. ENGAGE PARTNERS, DEFINE ROLES

1C. CREATE PROTOCOL FOR CONTINUED PUBLIC ENGAGEMENT

1D. CREATE WORK PLAN AND SCHEDULE

1E. DEFINE NEXT STEPS

OUTCOMES:

- A 'CHARTER' DEFINING ROLES AND LAYING OUT HOW THE PARTNERSHIP WILL WORK TOGETHER.
- A COMMUNICATION AND OUTREACH PLAN TO MAKE SURE PARTNERS AND OTHER INTERESTED PARTIES ARE INFORMED AND INVOLVED.
- A WORK PLAN TO GUIDE US IN COLLECTING INFORMATION TO BETTER UNDERSTAND OUR WATER RESOURCE NEEDS AND POTENTIAL STRATEGIES TO MEET THOSE NEEDS.
- IDENTIFY NEXT STEPS AS WE MOVE INTO PLANNING STEP 2.



Mid-Coast Water Planning Partnership

Discussion

Water Challenges and Opportunities

Purpose of the discussion is to get the perspectives of your group on -

- Key water issues on the Mid-Coast that we need to focus on in this planning process.
- Identify important outcomes or results of this collaborative partnership.

Discussion Host Instructions:

Thank you for being a Discussion Host! You have a vitally important role in the success of today's meeting. Your task is to:

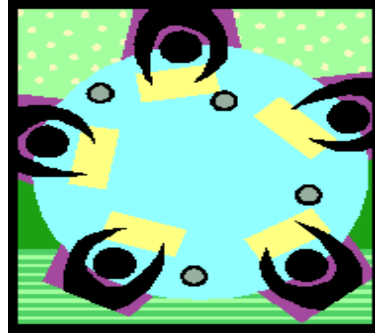
- Get acquainted - Invite members of your group to introduce themselves.
- Lead a discussion on the two questions listed on the back side of this paper.
- Note key discussion points on the back side of this paper.
- At the end of the discussion, prepare to give a two-minute summary of the key points to share with the large group.
- After you've shared your summary, please put your notes in the manila envelope and pass it to the facilitator.

That's it! We hope you find this discussion to be both fun and enlightening!

Questions? Ask your facilitators . . .

DISCUSSION HOST SUMMARY SHEET

Please use this sheet to record the key points of your table group's discussion. You will have 20 minutes to discuss the 2 questions and develop your summary notes.

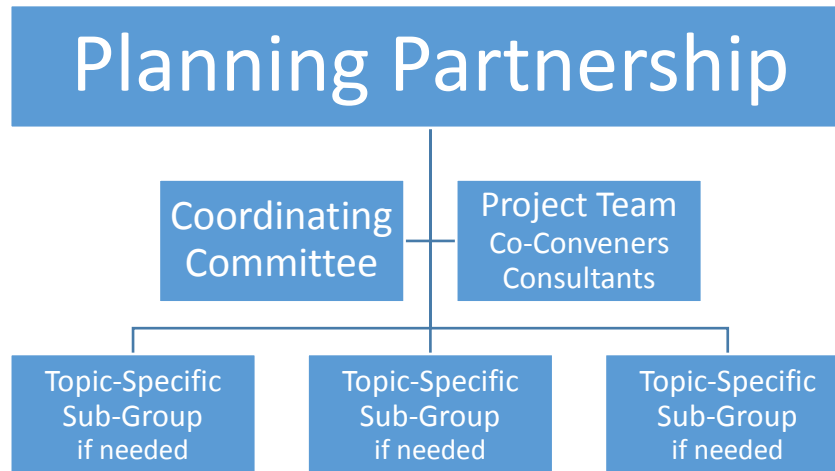


Discussion Host Name: _____

Question 1	Question 2
<p><i>From YOUR perspective – what are the KEY WATER ISSUES on the Mid-Coast that we need to focus on?</i></p>	<p><i>What do you hope the OUTCOMES will be as a result of this collaborative partnership?</i></p>

After you've given your 'report' to the large group, please put your notes in the manila envelope and hand them to your facilitator. Thank you for being a Discussion Host!

STRUCTURE AND ROLES



- **Planning Partnership:** Broad group of stakeholders –
 - Identify study-related interests.
 - Identify current and future water challenges.
 - Consider quality, quantity and ecosystem needs.
 - Identify ways to increase resilience.
 - Plan together to meet future needs.
 - Provide direction to the Coordinating Committee.
- **Coordinating Committee:** Subset of Planning Partnership – Approximately 7-10 people. Diverse group representing a range of interests. Convenes between meetings of Partnership Group to:
 - Provide advice on how to structure stakeholder engagement and communication to ensure that diverse interests are included in the process.
 - Identify potential issues, gather information, and frame issues for discussion by the Partnership Group.
 - Communicate with stakeholders about the planning process and issues of interest.
 - Advocate for a planning process that balances interests.
 - Provide process support and conduct work to support the Partnership Group.
- **Project Team (PT):** The PT plans meetings, prepares materials and meeting minutes for the process. Includes Co-conveners OWRD and City of Newport, as well as technical consultants, GSI Water Solutions and Facilitators, Innovative Growth Solutions.
- **Sub-groups:** Topic-specific sub-groups may be designated as needed to work on specific aspects of the plan and/or assist in communication regarding the Study.

CALL TO ACTION

Tonight:

- Complete the 'Interest Sheet' – Let us know if you are interested in joining the Partnership or being on the contact list.
- Consider volunteering to serve on the Coordinating Committee. Please indicate your willingness on the 'Interest Sheet' (blue paper).
- Turn your interest sheet in.
- Join us for some light refreshments and informal conversation or . . .
- If you need to travel over Highway 20 tonight – *MAKE A RUN FOR IT!* Highway 20 closes at MILE POST 16 at 7:00 pm.

Next Steps:

- Coordinating Committee to be established and begin work on developing a Charter to guide future Partnership discussions.
- Next meeting of Partnership will be scheduled for late November (tentatively scheduled for November 29 from 4 -7 pm)

Stay in Touch – Visit the Partnership Website at:

www.midcoastwaterpartners.com



Mid-Coast Water Planning Partnership

Sign In Please!

Name: _____

Date: _____

Organization(s) you are representing:

Contact Information:

Email: _____

Phone: _____

Address: _____

Level of Interest/Participation

Please select all that apply

- I want to join the 'Planning Partnership'.
- I want to volunteer to serve on the 'Coordinating Committee'. See back for description.
- I would like to serve on topic-specific sub-groups if needed. My area of interest/expertise is:

- Please keep me informed via the email list.
- I am interested, but I need more time to think about level of participation.
- No further interest, please remove me from contact list.
- I want to recommend someone else to be added to the contact list: Name and contact information:

Best time to meet . . .

Please note all times that work for you

Day of Week:

- Monday Tuesday
- Wednesday Thursday
- Friday

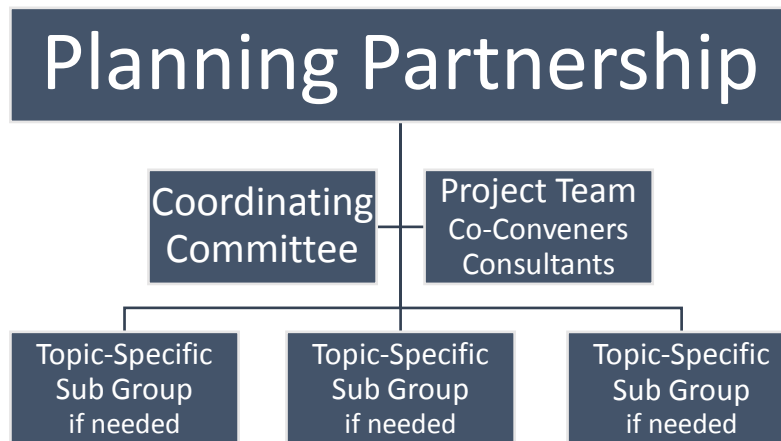
Time of Day:

- 8-10am 10-12n
- 1-3pm 3-5pm
- Evening

Week of Month:

- First Second
- Third Fourth
- Evening

STRUCTURE AND ROLES



- **Planning Partnership:** Broad group of stakeholders that will work collaboratively to identify current and future water challenges and plan together to meet future instream and out-of-stream water needs. The Planning Partnership provides direction to the Coordinating Committee and makes decisions about the contents of the final plan.
 - Participate in 3 hour meetings every other month or every third month.
 - Review all materials produced for the partnership and come to meetings prepared.
 - Engage in open dialogue, represent your own values and interests with honesty and integrity, seek to find solutions that can also meet the interests of other members.
 - Decide what the planning group and coordinating committee focus on and what officially gets captured and recommended in the plan.

- **Coordinating Committee:** Subset of Partnership – Approximately 7-10 people. Diverse group representing a range of interests. Gets together between meetings of the Planning Partnership to provide advice to ensure that diverse interests are included, identify potential issues, gather information and frame issues for discussion by the Partnership, and advocate for planning process that balances interests. We need approximately 7-10 people who meet the following criteria:
 - Participate in monthly meetings of 2-3 hrs. in length for next 6 months during completion of Planning Step 1.
 - Spend the time to complete actions identified by the Planning Partnership
 - Frame issues and prepare information for discussion by the Planning Partnership.
 - Solicit diverse perspectives, listen to ideas that are not their own, and represent a broad range of perspectives. (This is not a forum to advocate for individual interests.)
 - Interested in serving a leadership role in building community and statewide awareness and support.

- **Project Team (PT):** The PT plans meetings, prepares materials and meeting minutes for the process. Includes Co-conveners OWRD and City of Newport, as well as technical consultants, GSI Water Solutions and Facilitators, Innovative Growth Solutions.

- **Sub-groups:** Topic-specific sub-groups may be designated as needed to work on specific aspects of the plan and/or assist in communication.