



PARTNERSHIP EARLY IMPLEMENTATION WORK PLAN

Mid-Coast Water Planning Partnership

Funding for the Prioritization Project and Early Implementation Work Plan was provided by the Oregon Water Resources Department through an American Rescue Plan Act (ARPA) grant.



August 2024

This page intentionally left blank

Table of Contents

The Mid-Coast Water Planning Partnership	1
Early Implementation Work Plan Components	1
Implementation Support Process	1
Water Action Plan Bundled Actions	5
Implementation Gaps Table	7
Potential Leads and Participants Table.....	15
Smartsheet Project Database and Management Tool.....	21
Bundle Work Plans.....	21
Early Implementation Work Plan Schedule.....	21
Estimated Schedule of Potential Partnership Activities.....	21
Updated Partnership Charter	23

Attachments

Attachment A	Prioritization Process and Results
Attachment B	Updated Partnership Charter

The Mid-Coast Water Planning Partnership

The Mid-Coast Water Planning Partnership (MCWPP or Partnership) is an inclusive community forum of regional partners working to ensure balanced water resources for the environment, the economy, and coastal communities. The Partnership began as one of four pilot groups conducting place-based integrated water resources planning through a new program of the Oregon Water Resources Department (OWRD) in 2016. The Partnership's Water Action Plan was adopted in 2022. In 2023, the Partnership received an American Rescue Plan Act (ARPA) grant from OWRD to conduct a prioritization of actions outlined in the Water Action Plan, to begin early implementation by developing work plans, and to continue regional coordination around water issues. The effort was led by the Partnership Convener, Seal Rock Water District, and facilitated by GSI Water Solutions, Inc. (GSI).

The Partnership Early Implementation Work Plan has been developed to guide the Partnership's implementation of actions in the Water Action.

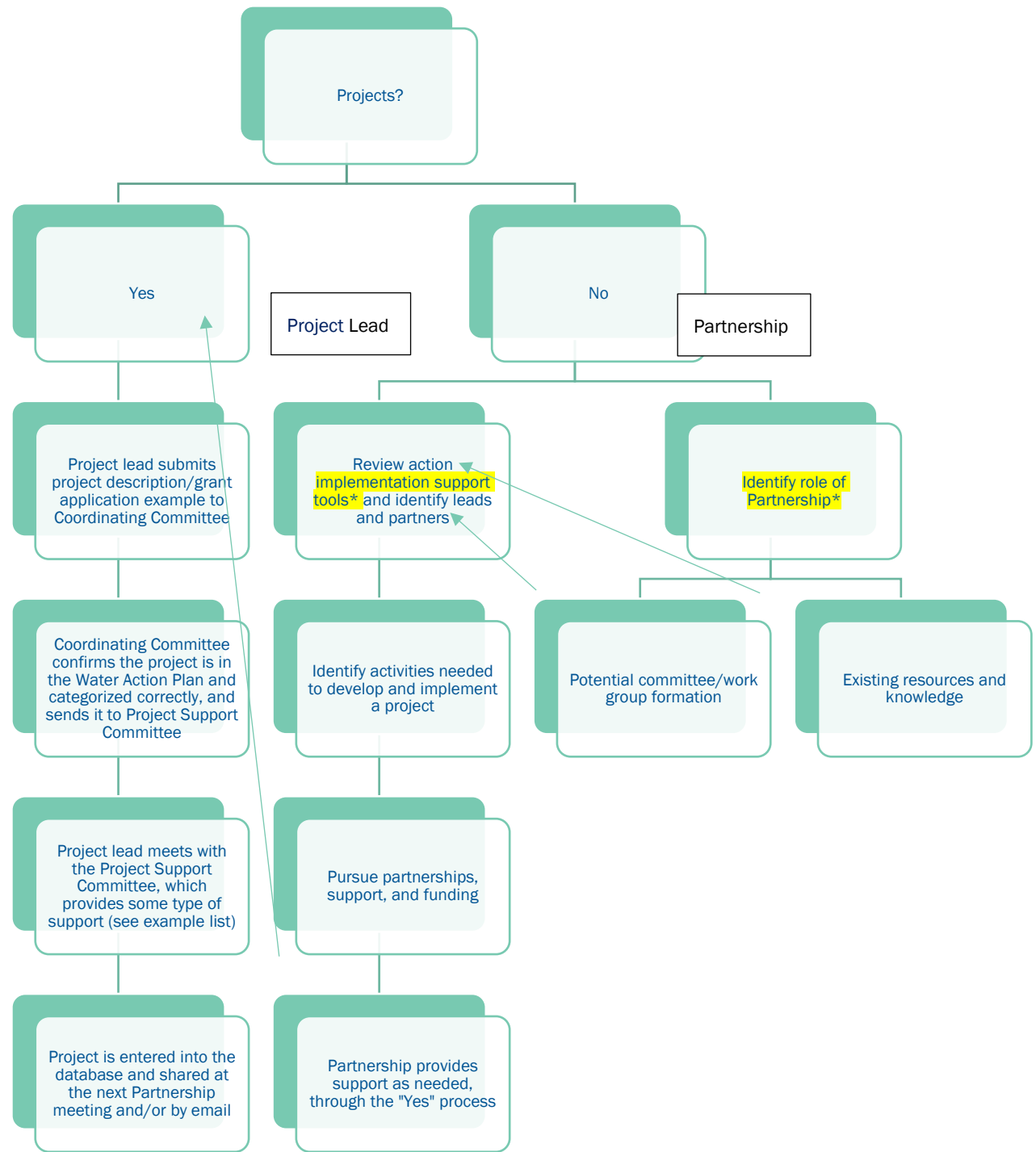
Early Implementation Work Plan Components

The Early Implementation Work Plan is comprised of several documents, or tools, that can be utilized in the Partnership's efforts to support implementation of actions in the Water Action Plan. Together, these tools describe the process that the Partnership can use to support existing projects, catalyze development of new projects, track implementation, and continue to support regional collaboration.

Implementation Support Process

The implementation support process, developed by the Early Implementation Work Group, describes a process for the Partnership to use to support projects that would implement specific actions in the Water Action Plan. The Implementation Support Process document includes a flowchart showing the pathway for supporting existing projects and for developing and supporting new projects, descriptions of how the process works depending on whether existing projects have been identified, and a list of potential types of support that the Partnership could provide. Where existing projects have not been identified, the support process would focus on launching and supporting projects that implement Priority Group A actions first.

Partnership Support Flowchart



*Prioritization of actions utilized in these stages (e.g., Partnership identifying which actions to assist with moving forward utilizing the prioritization, and implementation support tools developed following the prioritization order)

Partnership Support Process

Projects Identified

The MidCoast Water Planning Partnership will strive to support projects that would help implement specific actions in the Water Action Plan. Many such projects have already been identified and are tracked using the Smartsheet online project database.

When a project lead wishes to seek support from the Partnership, the first step is to submit a project description to the Coordinating Committee. Project leads may use existing documents (e.g., a grant application) or create a short description of the proposed project that includes the proposed activities, timeline, a statement of which action in the Water Action Plan it would implement, and the requested type of Partnership support. The Coordinating Committee confirms that the project supports implementation of the Water Action Plan and refers it to the Project Support Committee. The Project Support Committee determines the type of support the Partnership can offer.

Projects Not Identified

The prioritization process sorted the actions in the Water Action Plan into three priority groups, and existing projects were documented in the Smartsheet database. Certain actions in Priority Group A (the highest priority) do not yet have associated projects. The Partnership will focus on launching projects to implement these high-priority actions first to help achieve the goals of the Water Action Plan. Using the implementation support tools, potential lead entities and partner entities will be identified. Next, these entities will identify activities that would be needed to initiate a project that would support the Priority Group A action and would begin pursuing necessary partnerships and funding. Once a potential project is identified, it would move through the Partnership support process described above.

In parallel with the identification of individual projects, the Partnership will identify its role as an overarching collective in helping to support the Priority Group A actions. (Priority Group B and C actions may also be supported as opportunities arise or are championed by specific entities; however, early implementation will focus on Priority Group A in the absence of other factors.) The Partnership may decide that committees or work groups should be formed to focus on specific actions (e.g., a Monitoring Committee to support actions related to water quality and quantity monitoring). Partnership members bring a valuable spectrum of existing resources and knowledge that can be used to help identify potential projects, provide technical assistance to refine project ideas, and identify likely funding sources.

Example Types of Potential Partnership Support

- Ideas for funding sources
- Contact information for potential partners
- Letters of support
- Strategic or technical advice to strengthen projects
- Project sharing opportunities (e.g., Partnership emails, Work Group meetings, Partnership meetings)
- Action Implementation Work Plan Tools
 - Table identifying leads and participants for each action in the Water Action Plan
 - Bundled Action Work Plans (To be developed starting with Priority Group A)
 - Approach
 - Resources
 - Outcomes
 - Action Implementation Tracking Database (Smartsheet)
 - Database for tracking projects and project accomplishments, as well as how the Partnership is supporting projects
- Grant writing workshop
- Surveys
- Committee/Work Group formation

Water Action Plan Bundled Actions

The Water Action Plan categorized actions into broad themes called Imperatives during the planning process. The Partnership then conducted a prioritization process and adopted the results by a consensus decision of the Partnership in May 2024. The Prioritization Process and Results document ([ATTACHMENT A](#)) describes this process, provides a list of individuals who participated in the process and their affiliations, and presents the results of the prioritization in a table. The outcome of the prioritization process is that the actions in the Water Action Plan are grouped into three priority categories (A, B, and C) to guide the Partnership in moving forward with implementation and directing resources to the highest-priority activities when facing resource constraints.

During the prioritization process, Work Group members identified synergies among certain actions across imperatives that could prove useful for implementation. For example, a project might simultaneously implement multiple actions within the same imperative or in another imperative. The Water Action Plan Bundled Actions document shows these potential synergies as “bundles” of related actions. This document can be used in several ways:

- Entities that are planning to implement a project under one action can use the document to see if the project already implements related actions or could be modified or expanded to implement additional actions.
- Entities can use the document in combination with the Leads and Participants document to identify potential partners that are implementing similar projects in the bundle.

Water Action Plan Bundled Actions

Bundle	Imperative	Action #	Priority	Brief Description
1	1	1	A	Public awareness of water issues
	1	1a	A	Conservation outreach
	1	1b	A	Drought/curtailment messaging
	1	1f	A	School water outreach
2	2	4	A	MC Water Conservation Consortium
	1	1g	A	Water quality outreach
	1	1h	A	Water quality outreach
	1	1j	A	Source water outreach
	1	1i	B	Pesticide outreach
	1	1k	B	Best management practice outreach
3	2	5	A	Green infrastructure and low-impact development
	2	12	A	DWPPs
	2	13	A	DWPPs
	6	35	A	Identify/implement source protection
	6	36	B	Source contamination prevention
4	3	16	A	Stream gages
	3	17	A	Water quality monitoring
	3	18	A	Water quality monitoring
	3	19	A	Volunteer network for monitoring
5	6	41	A	Protect critical lands
	8	58	A	Protect critical lands
6	8	44	A	Ecological restoration
	8	46	A	Riparian restoration
	8	49	A	Beavers
	8	50	A	Ecological restoration
	8	51	A	Restore hyporheic flows
	8	53	A	Water retention capacity
7	8	54	A	Instream demand, ISWRs, flow restoration
	8	55	A	Instream transfers/leases
	8	52	B	Support water appropriation limits
	3	14	B	Upgrade meters
8	5	28	A	Upgrade meters
	4	22	A	Water reuse
9	4	23	B	Water reuse outreach
	2	2	A	Regional water supply plan
10	2	10	A	Emergency response plans
	5	31	A	Storage feasibility studies
	7	42	A	Identify new water sources

Bundle Theme

- 1 Water conservation
- 2 Water quality
- 3 Source water protection
- 4 Monitoring
- 5 Protect critical lands
- 6 Ecological restoration
- 7 Instream flow restoration
- 8 Meters
- 9 Water reuse
- 10 Water supply planning/development

Non-Bundled Actions in Priority Group A

Imperative	Action #	Brief Description
8	59	Spatial analysis to prioritize restoration projects

Note: related to Bundle 6, but focusing on studies rather than on-the-ground implementation projects.

Implementation Gaps Table

The first step in understanding progress in implementing the Water Action Plan is to assess which actions have projects associated with them. The Water Action Plan identified potential lead entities and participating entities for each action. Many projects are already underway, but resource constraints and timing issues mean that not all actions are being implemented yet. The Implementation Gaps Table shows each action, its Priority Group, and whether associated projects have been identified as of summer 2024. The table also includes information on which entities are known to be implementing the action and whether they were identified as a lead or participant in the Water Action Plan. This document can be used to identify potential project partners and to identify implementation gaps to address as the Partnership moves through the prioritized list of actions.

DRAFT

This page intentionally left blank

DRAFT

Implementation Gaps Table

Imperative	Action #	Bundle	Action Description	Short Action Description	Priority Group	Projects?	Entities Implementing Actions	Entities Identified As a Lead or Participant in the Action Plan?	Lead Entities Identified in Action Plan - Not Implementing Action	Lead and Participant Entities Identified in Action Plan - Unknown If Implementing Action
1	1a	1: Water conservation outreach	Promote water conservation at local events, on the Mid-Coast Water Planning Partnership website and the websites of regional partners and entities, in news articles, in water bills, via social media, and through outreach materials to businesses, particularly in the hospitality industry.	Conservation outreach	A	Y	Water providers/MCWCC	Yes		Lincoln County Board of Commissioners; OWRD, universities
1	1b	1: Water conservation outreach	Develop drought declaration and audience-specific (e.g., self-supplied industrial water users) water conservation and curtailment messages.	Drought/curtailment messaging	A	Y	Water providers/MCWCC	Yes		Lincoln County Board of Commissioners; OWRD, universities
1	1c	N/A	Coordinate watershed and water system tours to increase awareness and understanding of regional and local water issues.	Watershed/system tours	C	Y				
1	1d	N/A	Develop a regional initiative/training to improve coordination and provide education to water providers on infrastructure financing and funding.	Infrastructure finance training	C	N				
1	1e	N/A	Provide an internship program, hands-on training, and certification training for water technicians, which includes technician training on updating and implementing water management.	Water technician internship	C	N				
1	1f	1: Water conservation outreach	Identify or develop curriculum and materials/information for students and the public (community education) about their water sources, water management, and water conservation.	Conservation education (school curriculum/community education).	A	Y	Protect Oregon Watersheds (At Oregon Coast Community College), MCWCC, ODFW (STEP), OWRD, DEQ, Lincoln County	Yes - MCWCC and OWRD identified as leads. No - Protect Oregon Watersheds and STEP not identified in Plan at all, ODFW and DEQ not identified under this action.	Oregon Coast Aquarium	
1	1g	2: Water quality outreach	Conduct outreach to encourage implementation of voluntary, incentive-based actions throughout the region, consistent with existing plans, such as the Mid-Coast Agricultural Water Quality Management Area Plan.	Water quality outreach	A	Y	Lincoln SWCD, MCWCC, MCWC, OSU Extension, NRCS (USDA)	Yes	OWRD	
1	1h	2: Water quality outreach	Inform self-supplied and public water users and residents and businesses within public water supply areas about water supplies and water protection measures, including proper well construction and maintenance, septic system maintenance, and proper use of landscape and other chemicals.	Water quality outreach	A	Y	OSU Extension	Yes		
1	1i	2: Water quality outreach	Work with partners and agencies (e.g., Oregon State University Extension Service) to deliver information on safe pesticide application practices and vegetation management practices that reduce or eliminate pesticide use. Provide outreach on water quality impacts of pesticides and fertilizers associated with lawn management near streams and ponds. Share methods that reduce impacts and identify alternatives.	Pesticide outreach	B	N				
1	1j	2: Water quality outreach	Conduct education in source water areas (including to those that may not be customers of the water provider) about drinking water sources, risks, choices, and strategies.	Source water outreach	A	Y	Water providers/MCWCC	Yes	Oregon Coast Aquarium	
1	1k	N/A	Connect private landowners with resources and information about best management practices to improve water quality and quantity.	Best management practice outreach	B	Y				
2	2	10: Water supply planning/development	Support the creation of a feasible 50-year county-wide water supply plan. Incorporate regionally integrated plans that improve water system resiliency and adequately plan for future water supply development in the face of natural and human-caused disasters.	Regional water supply plan	A	Y	Water providers/MCWCC, CTSI, Lincoln County, LCWSA, EPA (participant), OSU, Water Watch	Yes -Lincoln County, LCWSA & water providers are leads. No - CTSI and OSU not identified under this action. Water Watch not identified in Plan at all.	OWRD may be a partner/technical assistance resource but not a lead	(Leads): OHA, Regional Solutions; (Participants): Rural Community Assistance Corporation
2	3	N/A	Support the development of organizational procedures for the Mid-Coast Water Conservation Consortium (MCWCC) and the Lincoln County Water Systems Alliance (LCWSA) that will facilitate the prioritization and funding of projects throughout the region.	Prioritize and fund projects	B	Y				
2	4	1: Water conservation outreach	Strengthen/support the Mid-Coast Water Conservation Consortium to enhance water conservation, increase resiliency during shortages and emergencies, and pool resources of multiple water providers. Support enhanced coordination with state and federal entities outside of the Mid-Coast.	MC Water Conservation Consortium	A	Y	MCWCC, LCWSA	Yes		
2	5	10: Water supply planning/development	Support and advocate for planning and development that minimizes impacts to floodplains and riparian areas, promoting Green Infrastructure (GI) methods and Low Impact Development (LID) practices.	GI and LID	A	M	DLCD (has a Green Infrastructure Grant Program, doesn't implement on-the-ground projects)		ODF, ODFW	(Leads): County planners, municipal planning departments; (Participants): USFS, DEQ
2	6	N/A	Develop and update water management and conservation plans for the Mid-Coast regional municipal and self-supplied direct water systems.	WMCPs	C	Y				
2	7	N/A	Coordinate water curtailment plans among water providers.	Coordinate curtailment plans	B	N				
2	8	N/A	Encourage municipalities to update/complete required stormwater management control plans to incorporate GI/LID practices, using statewide LID technical design guide, and update codes and ordinances that are barriers to implementing these practices. Assist smaller communities, that are not currently required, in voluntarily developing similar stormwater management plans and technical design guides.	Stormwater management plans	C	N				
2	9	N/A	Advocate for Emergency Response Plans (required for public water systems) address water system needs and specific vulnerabilities and are interconnected to create a regional network during emergency situations.	Emergency Response Plans	C	Y				

Implementation Gaps Table

Imperative	Action #	Bundle	Action Description	Short Action Description	Priority Group	Projects?	Entities Implementing Actions	Entities Identified As a Lead or Participant in the Action Plan?	Lead Entities Identified in Action Plan - Not Implementing Action	Lead and Participant Entities Identified in Action Plan - Unknown If Implementing Action
2	10	10: Water supply planning/development	Collaborate with emergency operations planners to identify highest priority water needs and develop alternative systems and plans. Identify opportunities and access for shared water available for addressing emergency interconnections.	Emergency Response Plans (Updates to Natural Hazard Mitigation Plan)	A	M	Lincoln County, water providers (need more information), DLCD (does natural hazard planning with local jurisdictions)			
2	11	N/A	Support the development of tiered communication trees to address: a) typical support needs b) response to localized emergencies affecting one or multiple Public Water Systems; and c) Cascadia Subduction Zone quake, volcanic eruption, regional wildfire. Provide communication alternatives for inoperable phone/internet (HAM resources; meeting locations and days/times).	Communication trees	C	N				
2	12	3: Source water protection	Develop regionally integrated Drinking Water Protection Plans to ensure that strategies and implementation plans are in place to minimize threats to water supply sources throughout the Mid-Coast. Advocate for funding to support the development and plan implementation.	DWPPs	A	Y	Water providers, DEQ, OHA	Yes		Lincoln County
2	13	3: Source water protection	Create a Source Water Protection Plan, or multiple source-specific plans, to reduce, or minimize contaminants from entering source waters. Advocate for funding to support the development and implementation of these plans.	DWPPs	A	Y	Water providers, DEQ, OHA	Yes		Lincoln County
3	14	N/A	Implement more efficient advanced metering infrastructure to enable faster identification of leaks and shortages, and support best practices for water providers to meet industry standards for documenting water loss.	Upgrade meters	B	Y				
3	15	N/A	Recommend installation and use of flow meters to gain a more accurate estimate of water use in the region.	Flow meters on diversions	B	N				
3	16	4: Water quality monitoring	Fully fund, install, and monitor real-time stream gauging stations throughout region in priority locations and times of year when they are needed most to accurately assess source water and enable innovative demand-reduction actions during periods of critical ecological need.	Stream gages & streamflow monitoring	A	Y	Water providers	Yes	OWRD has funding but is not a lead	(Leads): USGS, OWEB, Lincoln County, watershed councils; (Participant): ODFW
3	17	4: Water quality monitoring	Develop and implement a coordinated long-term water quality monitoring program throughout the region (e.g., source water, streams, estuaries) to improve understanding of current conditions and event-caused conditions (i.e., storm, low-flow) for nutrients, bacteria, temperature, dissolved oxygen, pH, turbidity and other specific contaminants identified by DEQ, including those that contribute to harmful algal blooms (HABs). Collect water samples to identify pollutant sources (location, source, practices influencing input, transport and fate of pollutants). Advocate for additional sampling in headwaters (where herbicides and pesticides are applied) and at municipality intakes.	Water quality monitoring	A	Y	MCWC, Wild Salmon Center, Lincoln SWCD, CTSI, ODFW, OHA, ODA, Water providers/MCWCC, Lincoln County, DEQ, Oregon Coast Aquarium	Yes - all identified as leads. No - Wild Salmon Center, CTSI, & Oregon Coast Aquarium not leads under this action.	OWRD (not water quality)	USFS, LCWSA
3	18	4: Water quality monitoring	Conduct comprehensive and ongoing water testing, and use results to guide best management practice implementation, restoration, etc. to address water quality impairments.	Water quality testing	A	Y	Lincoln SWCD, DEQ, OHA			USFS, Lincoln County
3	19	4: Water quality monitoring	Develop a coordinated network of people conducting stream flow monitoring and water quality monitoring to share resources and data. Explore cost-effective ways to incorporate volunteers in data collection to complement gauging network.	Volunteers for monitoring	A	M	Lincoln SWCD		OWRD (not water quality)	(Lead): Lincoln County; (Participants): MCWCC, SWCD, DEQ, ODFW, OWEB, USFS
3	20	N/A	Support the aggregation and update of current self-supplied water system databases, including system description, system status, and system needs. Determine what exists from current databases. Track wells going dry via self-reporting.	Self-supplied water database	C	N				
3	21	N/A	Develop a water monitoring database for data entry and access by multiple entities.	Water monitoring database	C	N				
4	22	9: Water reuse	Improve understanding of Oregon's existing water reuse regulations, and the opportunities and barriers (e.g., health issues) to using recycled and gray water for all allowed uses. Encourage development of comprehensive water reuse programs at appropriate scales.	Water reuse	A	Y	OWRD, DEQ, Lincoln County	Yes - OWRD, DEQ, Lincoln County all leads.		(Leads): OHA, water providers; (Participants): Homeowners & businesses, ODFW & other state agencies
4	23	N/A	Investigate and share information on methods of reusing treated sewage plant water and water at water treatment plants (e.g., backwash) and regional industries for potable, agricultural, and industrial uses.	Water reuse outreach	B	N				
4	24	N/A	a) Incentivize commercial and industrial facilities to conduct water audits, identifying water loss and implementing conservation, recycling, and re-use strategies and technologies. b) Evaluate and potentially revise water pricing strategies commensurate with actual delivery costs as well as other strategies to stimulate water conservation and re-use while raising revenue for water conservation investments (e.g., improved efficiency at commercial facilities).	Comm/industrial water audits	B	N				
4	25	N/A	Work with the NRCS to develop a Conservation Implementation Strategy to provide incentives and technical support to agricultural irrigators interested in making improvements, such as increased efficiencies to minimize evaporation losses.	Conservation rate study	C	N				

Implementation Gaps Table

Imperative	Action #	Bundle	Action Description	Short Action Description	Priority Group	Projects?	Entities Implementing Actions	Entities Identified As a Lead or Participant in the Action Plan?	Lead Entities Identified in Action Plan - Not Implementing Action	Lead and Participant Entities Identified in Action Plan - Unknown if Implementing Action
4	26	N/A	Identify and develop voluntary incentives for water conservation.	NRCS Conservation Impl Strategy	B	Y				
4	27/43	N/A	Using the Water Management Economic Assessment Model, develop a suite of adaptation measures (e.g., storage investments, conservation rebate programs, and new pricing models) to address existing and predicted water shortages in the region.	Conservation incentives	C	N				
5	28	8:Meters	Support upgrading and maintaining water metering system infrastructure, where possible. Note: Automated read systems (not SMART) can be installed at reduced cost.	Upgrade meters	A	Y	Water providers/MCWCC	Yes		
5	29	N/A	Use the latest technologies (e.g., In system monitoring and controls, pumping efficiency, automating, and controlling potential zone isolations) available when retrofitting, or replacing, water infrastructure.	Storage feasibility studies	C	Y				
5	30	N/A	Address distribution system failures by installing earthquake valves in water tanks to retain water even if distribution system fails.	Identify/implement source protection	C	N				
5	31	10: Water supply planning/development	Evaluate alternatives for both natural and built (human-made) water storage with the planning area. For built systems, identify and perform feasibility studies needed to assess whether projects are viable using established and agreed-upon criteria (economic, environmental, regulatory, etc.).For natural storage "systems", identify feasibility studies needed to assess project viability using established and agreed-upon criteria. For those that appear viable, developed estimates of seasonal water storage and release.	Storage feasibility studies	A	M	Water providers	No - water providers not a lead under this action.	MCWC	Participants): USGS, state & federal agencies
5	32	N/A	Support the expansion of the state-supported revolving fund (including developing a new fund for self-suppliers) to accelerate water infrastructure improvements. Improve access to funding by enhancing coordination and collaboration with communities).	Identify new water sources	C	N				
5	33	N/A	Identify funding programs to support infrastructure enhancements that advance sustainable and secure water solutions for the region. Study how other cities and counties have funded their infrastructure improvements through time and manage water infrastructure assets.	Ecological restoration	B	N				
5	34	N/A	Establish a community revolving loan program for infrastructure improvements for septic systems.	Riparian restoration	C	N				
6	35	3: Source water protection	Identify, fund, and implement high-priority regional source water protection activities.	Identify/implement source protection	A	M	NRCS (need more info), DLCD (has funding programs)	No - NRCS not a lead under this action.	DEQ may have funding, depending on the project	Water providers
6	36	N/A	Support the reduction of nutrient, turbidity, and bacteria inputs and emerging contaminants of concern (e.g., PFAS, PFOA, PFOS, pharmaceuticals, etc.) to source water from all sectors using the latest technology.	Protect critical lands	B	N				
6	37	N/A	Enhance contamination prevention measures for reservoirs, surface water intakes, springs, and/or wellheads.	Identify new water sources	C	N				
6	38	N/A	Assess and evaluate harmful algal bloom events that affect source water to identify potential contributing sources, and educate and support the reduction of nutrient inputs to source water from all sectors to prevent algal blooms (e.g., promote agricultural nutrient management plans, grants to reduce inputs, well water nitrate screening, well water and septic system education, low-input gardening).	Ecological restoration	B	N				
6	39	N/A	Advocate for integrated pest management (e.g., minimize aerial spraying in watersheds adjacent to source water; promote hand clearing in riparian zones (versus hand spraying); support notification of all water treatment facilities when and where spraying will occur), as well as notification of downstream water users who are not on municipal water systems and rely on source water for domestic use.	Riparian restoration	B	Y				
6	40	3: Source water protection	Furthering a working lands concept, advocate for incentives, and other strategies, that promote silvicultural practices that support restoration of watershed ecological function and protect drinking water source areas.	Silvicultural practices that support source water area protection	A	Y	BLM, ODF			USFS
6	41	5: Protect critical lands	Protect critical lands within drinking water source areas through acquisition, conservation easements, or other tools that prevent degradation and/or impacts to source water quality.	Protect critical lands	A	Y	Water providers, McKenzie River Trust, Wetlands Conservancy	Yes - McKenzie River Trust a lead & water providers a participant under this action.	MCWC	(Leads): The Nature Conservancy
7	42	10: Water supply planning/development	Seek additional and alternative sources of water for development in the region.	Identify new water sources	A	Y	Water providers/MCWCC, CTSI, Lincoln County, LCWSA, OSU, Water Watch	Yes - Lincoln County & LCWSA leads, MCWCC a participant. No - CTSI and OSU not identified under this action. Water Watch not identified in Plan at all.	DLCD, OWRD (may provide technical assistance but not a lead)	
7	27/43	N/A	Using the Water Management Economic Assessment Model, develop a suite of adaptation measures (e.g., storage investments, conservation rebate programs, and new pricing models) to address existing and predicted water shortages in the region.	Water retention capacity	C	N				

Implementation Gaps Table

Imperative	Action #	Bundle	Action Description	Short Action Description	Priority Group	Projects?	Entities Implementing Actions	Entities Identified As a Lead or Participant in the Action Plan?	Lead Entities Identified in Action Plan - Not Implementing Action	Lead and Participant Entities Identified in Action Plan - Unknown If Implementing Action
8	44	6: Ecological restoration	Support restoration projects that involve diverse landowners and land management goals in locations that will achieve the greatest ecological returns on investment (e.g., cooler streams and improved summertime flows for sensitive species and to address water quality impairments).	Ecological restoration	A	Y	Lincoln SWCD, MCWC, DEQ, ODFW, BLM, CTSI, USFS, landowners, ODF, LCWSA, OHA, The Nature Conservancy, Wild Salmon Center, Water providers/MCWCC, USFWS	Yes - MCWC, USFS, BLM leads under this action. ODFW, DEQ, CTSI (Tribal nations), landowners are participants. Yes - ODF identified as a lead, but acts more in a participant role with a focus on rule compliance. No - LCWSA, OHA, The Nature Conservancy, Wild Salmon Center, Water providers not identified under this action. USFWS not identified in plan at all.		(Participants): Salmon Safe, volunteers, Lincoln County Dept. Community Development, NOAA Fisheries, USGS, OWEB
8	45	N/A	Use established methods (e.g., field assessment, remote sensing, and physical models, such as Heat Source) and local knowledge to prioritize stream reaches for riparian buffer restoration projects. Increase wooded buffer zones on priority streams.	Instream transfers/leases	B	Y				
8	46	6: Ecological restoration	Advocate for the restoration and conservation of native riparian vegetation to facilitate large natural wood recruitment, maintain water quality, ensure ecological function, and produce habitat for aquatic species, including beavers.	Riparian restoration	A	Y	MCWC, ODFW, USFS, BLM, Lincoln SWCD, landowners, ODA, ODF, USFWS, The Nature Conservancy	Yes - MCWC listed as a lead, ODFW, USFS, Lincoln SWCD, landowners listed as participants. Yes - ODF and ODA identified as leads, but both act more in a participant role with a focus on rule compliance. No - The Nature Conservancy not listed under this action, USFWS not identified in Plan at all.		(Lead): DEQ; (Participants): USFS, Lincoln County, Tribal nations
8	47	N/A	Implement more erosion control practices.	Spatial analysis prioritize restoration	B	N				
8	48	N/A	Evaluate anthropogenic sources of fine sediment from all land uses, including mass wasting and unsurfaced roads. Seek funding opportunities to reduce shallow landslide risk and other sediment delivery hazards (e.g., undersized culverts, outdated road maintenance, legacy roads) and perform road upgrades, repair, and decommissioning.	Erosion control	B	N				
8	49	6: Ecological restoration	Protect beaver populations and encourage beaver pond creation, especially in critical areas with low summer flows.	Beavers	A	Y	MCWC, ODFW, USFS, BLM, landowners, ODF, ODA, Lincoln SWCD, NOAA, Pacific States Marine Fisheries, USFWS, The Nature Conservancy	Yes - MCWC, ODFW, USFS, BLM are leads. ODA is a participant. Yes - ODF and ODA identified as participants, but both act more in a participant role with a focus on rule compliance. No - these are not listed under this action. USFWS and Pacific States Marine Fisheries are not in plan at all.		(Participant): Lincoln County
8	50	6: Ecological restoration	Design and implement restoration projects with partners to directly address impairments and improve conditions (e.g., erosion prevention and control, riparian and wetland buffers, urban tree protection).	Ecological restoration	A	Y	ODFW, MCWC, USFS, BLM, Lincoln SWCD, ODF, ODA, CTSI, landowners, The Nature Conservancy, Wild Salmon Center	Yes - MCWC, USFS, BLM, Lincoln SWCD listed as leads. Yes - ODF and ODA identified as participants, but both act more in a participant role with a focus on rule compliance. No - CTSI, landowners, The Nature Conservancy, Wild Salmon Center not listed under this action.		(Participants): DEQ, OSU Extension, OWEB, water providers
8	51	6: Ecological restoration	Evaluate the mechanisms and conditions for restoring hyporheic flows (the transport of surface water through sediments in flow paths that return to surface water) in the Mid-Coast using a suite of strategies (articulated in the Oregon Plan and other plans).	Restore hyporheic flows	A	Y	MCWC, ODFW, BLM, Wild Salmon Center	Yes - MCWC and BLM are leads, ODFW is a participant. No - Wild Salmon Center not listed under this action.		(Leads): USFS; (Participants): DEQ, USGS, Tribal nations
8	52	N/A	Recommend limits on further appropriation of water on high priority streams where water is not available for meeting aquatic life needs.	Restore hyporheic flows	B	Y				
8	53	6: Ecological restoration	Support projects that result in increased water retention capacity in channels, floodplains, and adjacent uplands and wetlands using a variety of strategies.	Water retention capacity	A	Y	MCWC, BLM, ODA (funding), DSL (participates on permitting side), Lincoln SWCD	Yes - both are leads		(Leads): USFS, local planners; (Participants): ODFW, DEQ, ODF, OWRD, USGS, Tribal nations
8	54	7: Instream flow restoration	Determine ecological flows (seasonally varying flow targets and temperature-based flow targets), and identify basin-wide in-stream demands. Support development of additional instream water rights. Implement flow restoration efforts in high priority areas as determined by Instream Water Right Monitoring and other means (e.g., ODFW's Aquatic Habitat Prioritization).	Instream demand, ISWRs, flow restoration, habitat prioritization	A	Y	ODFW, MCWC, Wild Salmon Center (applying for project funding)	Yes - ODFW a lead, MCWC a participant. No - Wild Salmon Center not listed under this action.	DSL, Salmon-Drift Creek Watershed Council (merged with MCWC)	(Leads): DEQ, OWRD, OPRD; (Participants): local planners

Implementation Gaps Table

Imperative	Action #	Bundle	Action Description	Short Action Description	Priority Group	Projects?	Entities Implementing Actions	Entities Identified As a Lead or Participant in the Action Plan?	Lead Entities Identified in Action Plan - Not Implementing Action	Lead and Participant Entities Identified in Action Plan - Unknown If Implementing Action
8	55	7: Instream flow restoration	Use established voluntary programs, or other tools, to convert existing water rights (e.g., irrigation, commercial use, other out-of-stream uses) to instream uses that protect critical flows needed to support fish and wildlife, water quality, recreation, and scenic attraction.	Instream transfers/leases	A	M	MCWC (is interested), Wild Salmon Center (doing policy work related to instream water rights) Action needs more support	Yes - ODFW & MCWC identified as participants. No - Wild Salmon Center not listed under this action.	DSL, ODFW (doesn't convert existing water rights to instream, only applies for instream water rights), OWRD (processes applications but is not a lead)	(Leads): DEQ, OPRD, water providers; (Participants): OWRD, OWEB
8	56	N/A	Identify priority invasive species in each watershed, and seek funding to support control and management of invasives in streams and along stream corridors while encouraging establishment of native vegetation.	Instream transfers/leases	B	Y				
8	57	N/A	Advocate for implementation of the Lincoln County Multi-Jurisdictional Natural Hazard Mitigation Plan, especially as it relates to wildfire mitigation in the Mid-Coast.	Invasive species	C	N				
8	58	5: Protect critical lands	Acquire land, or obtain conservation easements, to protect critical land areas managed for water quality protection.	Protect critical lands	A	Y	Water providers, McKenzie River Trust, Wetlands Conservancy	Yes - McKenzie River Trust a lead & water providers a participant under this action.	BLM, MCWC	(Leads): Lincoln County, USFS, watershed councils, NGOs, NRSC, corporations; (Participants): landowners, OWEB
8	59	N/A	Support and advocate for the compilation of a hierarchy of necessary spatial analyses and modeling to determine which conservation strategies, and locations on the landscape, will result in the greatest environmental returns on investment (ROI) (e.g., ecological function) and achieve the highest priorities in existing species recovery plans (e.g., improving winter and summer rearing habitats). Advocate for implementation of strategies in federal Coho recovery plan and Oregon coast Coho Conservation Plan (OWEB FIP Framework).	Spatial analysis prioritize restoration	A	N	Organizations are interested in participating in action but not leading it: EPA, MCWC, OWRD, ODFW, Wild Salmon Center (applying for project funding)	Yes - MCWC a lead, ODFW & EPA listed as participants No - Wild Salmon Center not listed under this action		(Leads): OWEB, DEQ, USFS, Lincoln County; (Participants): USGS, Tribal Nations, NGOs, OWEB

This page intentionally left blank

DRAFT

Potential Leads and Participants Table

The Potential Leads and Participants Table provides information about the leads and participants identified in the Water Action Plan. This provides some similar information to the Implementation Gaps Table, but it is organized by entity instead of action. The table shows which actions the entity (or category of entities, such as water providers) is leading and participating in, along with information about gaps identified where none of the lead entities listed in the Water Action Plan currently intends to implement the action. The action numbers in the table are accompanied by the associated Priority Group labels. This document can be used to learn about which entities are working on which actions and to identify potential leads and partners for advancing priority actions.

DRAFT

This page intentionally left blank

DRAFT

Potential Leads and Participants Table

Potential Lead & Participants	Lead on Action #s (Prioritization - Action #)	Participant for Action #s	Other Potential Action #s	Actions Being Implemented by Lead or Participant	Gaps Identified So Far (Priority A Only)
General Categories					
All Water Users	C-6	A-1f; A-1g; A-2; B-3; C-21; B-26; A-54			
Water Rights Holders		A-1; A-55			
Landowners / Land Managers	A-16; B-45; B-47; B-48; A-58	B-1k; A-22; B-38; A-44; B-45; A-46; B-47; B-48; A-49; A-58		A-44; B-45; A-46; A-49; A-50	
Other Federal Agencies	A-40	C-21; A-31	See Action 4		
Other State Agencies		A-2; A-4; C-21; A-22; A-31; A-55			
Tribal Nations		A-44; B-45; A-46; A-51; A-53; A-59			
Municipalities	C-6; C-8; A-12; A-13; A-16; A-17; A-55; A-58	C-32; A-41; B-52	See actions for "Water Providers" and "Mid-Coast Water Conservation Consortium", including: A-1a; A-1b; C-1d; A-1f; A-1g; A-2; B-3; A-4; A-10; C-11; B-14; A-19; B-23; A-28; C-34; C-37; B-39; A-42; C-43; A-50	A-1; A-1a; A-1g; A-1j; A-2; B-3; A-4; A-12; A-13; A-16; A-17; C-29; A-31; A-42; A-44	
Water Providers (public/industrial/private)	A-1; A-1a; A-1b; C-1d; C-1e; A-1f; A-1h; A-1j; A-2; A-4; C-6; B-7; C-9; A-10; C-11; A-12; A-13; B-14; A-16; A-22; B-23; B-24; B-26; A-28; C-29; C-30; B-33; A-35; C-37; B-38; A-55; A-58	A-2; B-3; A-4; C-34; B-39; C-43; A-50; B-52	See actions for "Mid-Coast Water Conservation Consortium", including: A-1g; A-17; A-19; C-32; A-42	A-1; A-1a; C-1c; A-1g; A-1j; A-2; B-3; A-4; C-6; C-9; A-12; A-13; B-14; A-16; B-26; A-28; C-29; A-31; A-42	
Agricultural Irrigators / Agricultural Sector	A-17	C-25	See Action 38		
Businesses and Corporations		A-22; A-58	See actions for "Commercial and Industrial Water Users", including: A-1; B-3; B-24		
Commercial and Industrial Water Users	B-24	A-1; B-3; A-22			
Self-supplied Water Users	A-1g	B-3			
Private Forestry Sector	A-17; B-48		See actions for "Landowners / Land Managers", including: B-1k; A-16; A-44; B-45; A-46; B-47; A-49; A-58		
Tourism Industry		A-1			
Colleges and Universities		A-1a; A-1b	See actions for "Education (All Levels)": A-1; A-1f; A-1j		
Education (All Levels) (incl. Lincoln County School District [LCSD])	A-1; A-1f; A-1j	A-1f			
Fund Managers	C-1d				
Local Planners	A-53	A-54	See actions for "Lincoln County Department of Planning & Development" and "Municipal Planning Departments", including: C-1d; A-5; A-44		
Municipal Planning Departments	A-5		See actions for "Local Planners", including: A-53; A-54		
Non-governmental Organizations	A-58	A-55; A-59		B-39	
Pesticide Control Organizations/Individuals (incl. a potential Pesticide Stewardship Partnership)	B-39	B-1i			
Watershed Councils and Groups	A-16; B-47; A-50; A-58	A-46; B-47; B-48; B-56	See Actions for "MidCoast Watersheds Council" and "Salmon-Drift Creek Watershed Council", including: A-1; A-1g; A-17; A-19; A-31; A-41; A-44; B-45; A-49; A-51; B-52; A-53; A-54; A-55; A-59		

Potential Leads and Participants Table

Potential Lead & Participants	Lead on Action #s (Prioritization - Action #)	Participant for Action #s	Other Potential Action #s	Actions Being Implemented by Lead or Participant	Gaps Identified So Far (Priority A Only)
Septic Companies (Private)		C-20			
Well Drillers (Private)		C-20			
Specific Entities					
Business Oregon	C-32	C-1d			
Clean Water Services, Hillsboro (cleanwaterservices.org)		B-23			
Confederated Tribes of Siletz Indians (CTSI)		B-52	See actions for "Tribal Nations", including: A-44; B-45; A-46; A-51; A-53; A-59	A-2; B-3; A-4; A-17; A-42; A-44; A-50	
Craft3 - Community Crafted Funding	C-34				
Devil's Lake Water Improvement District		C-34	See actions for "Water Providers", including: A-1; A-1a; A-1b; C-1d; C-1e; A-1f; A-1h; A-1j; A-2; B-3; A-4; C-6; B-7; C-9; A-10; C-11; A-12; A-13; B-14; A-16; A-22; B-23; B-24; B-26; A-28; C-29; C-30; B-33; A-35; C-37; B-38; B-39; C-43; A-50; B-52; A-55; A-58		
Hatfield Marine Science Center	A-1; A-1f; A-1j				
Inter-agency Stream Team	C-21				
Lincoln County	A-1h; A-2; C-9; C-11; A-12; A-13; A-16; A-17; A-18; A-19; C-20; A-22; C-34; A-42; B-47; C-57; A-58; A-59	B-39; B-47; B-48; A-49	See actions for Lincoln County Board of Commissioners, Lincoln County Department of Planning & Development, and Lincoln County Department of Health, including: A-1a; A-1f; A-5; A-44	A-2; B-3; A-4; B-39; A-42; B-56	
Lincoln County Board of Commissioners	A-1a				
Lincoln County Department of Planning & Development	A-5	A-44	See actions for "Local Planners", including: A-53; A-44		
Lincoln County Department of Health	A-1f				
Lincoln County Soil & Water Conservation District (SWCD)	A-1; A-1g; B-1k; B-15; A-18; C-25; B-36; B-47; A-50; B-56; A-59	A-19; C-34; A-44; A-46; B-47; B-48	See actions for "Pesticide Control Organizations/Individuals", including: B-1i; B-39	A-1g; A-17; A-18; A-19; B-39; A-44; B-45; A-46; A-49; A-50; A-53; B-56	
Lincoln County Water Systems Alliance (LCWSA)	A-2; B-3; A-4; A-17; A-42			A-2; B-3; A-4; A-42; A-44	
McKenzie River Trust	A-41; A-58	C-25			
Mid-Coast Water Conservation Consortium (MCWCC)	A-1a; A-1b; C-1d; A-1f; A-1g; B-3; A-4; B-7; A-10; C-11; B-14; A-17; B-23; A-28; C-37	A-19; C-32; A-42	See actions for "Water Providers" and "Municipalities", including: A-1; C-1e; A-1h; A-1j; A-2; A-4; C-6; C-8; C-9; A-12; A-13; A-16; A-22; B-24; B-26; C-29; C-30; B-33; C-34; A-35; B-38; B-39; A-41; C-43; A-50; B-52; A-55; A-58	A-1a; A-1b; A-1g; A-1j; A-2; B-3; A-4; A-17; A-28; A-42; A-44	
Mid-Coast Water Planning Partnership (MCWPP)	A-1a; C-1c; A-40	C-27; A-35; A-41; C-43		A-2; B-3; A-4; A-42	

Potential Leads and Participants Table

Potential Lead & Participants	Lead on Action #s (Prioritization - Action #)	Participant for Action #s	Other Potential Action #s	Actions Being Implemented by Lead or Participant	Gaps Identified So Far (Priority A Only)
MidCoast Watersheds Council (MCWC)	A-1; A-1g; A-17; A-31; A-44; B-45; A-46; A-49; A-51; A-53; B-56; A-59	A-41; B-52; A-54; A-55	See actions for "Watershed Councils and Groups" and "Salmon-Drift Creek Watershed Council", including: A-16; B-47; B-48; A-50; A-58	A-1g; A-17; A-44; B-45; A-46; A-49; A-50; A-51; B-52; A-53; A-54; A-55	A-31
National Oceanic and Atmospheric Administration (NOAA) Fisheries		A-44		A-49	
Oregon Association of Water Utilities		C-1d			
Oregon Coast Aquarium	A-1; A-1f; A-1j			A-17	A-1f; A-1j
Oregon Coast Community College (OCCC)	C-1e; A-1f		See actions for "Colleges and Universities" and "Education (All Levels)", including: A-1; A-1a; A-1b; A-1j		
Oregon Dept. of Agriculture (ODA)	B-1i; A-17; B-36; C-25; B-45; A-46; B-47; B-56	B-39; B-47; A-49; A-50; A-53	See actions for "Other State Agencies", including: A-2; A-4; C-21; A-22; A-31; A-55	A-17; B-39; A-46; A-50; A-53; B-56	
Oregon Dept. of Environmental Quality (DEQ)	A-1h; A-1j; C-9; A-12; A-13; A-17; A-18; A-22; B-36; B-45; A-46; B-52; A-54; A-55; A-59	A-5; A-19; B-23; B-26; C-34; A-35; B-39; C-43; A-44; B-48; A-50; A-51; A-53	See actions for "Other State Agencies", including: A-2; A-4; C-21; A-31	A-1f; A-12; A-13; A-17; A-18; A-22; A-39; A-44	A-35 (may have funding, but not otherwise involved)
Oregon Dept. of Fish and Wildlife (ODFW)	A-17; B-47; A-49; B-52; A-54	A-5; A-16; A-19; A-22; C-43; A-44; B-45; A-46; B-47; B-48; A-50; A-51; A-53; A-55; B-56; A-59	See actions for "Other State Agencies", including: A-2; A-4; C-21; A-22; A-31	A-1f; A-1j; A-17; A-44; B-45; A-46; A-49; A-50; A-51; B-52; A-54	A-5; A-55
Oregon Dept. of Forestry (ODF)	B-1k; A-17; A-40; B-45; A-46; B-47; B-48; C-57	A-5; B-39; A-44; B-47; A-49; A-50; A-53; B-56	See actions for "Other State Agencies", including: A-2; A-4; C-21; A-22; A-31; A-55	A-40; A-44; A-46; A-49; A-50	A-5
Oregon Dept. of Land and Conservation Development (DLDC)	A-5; A-42		See actions for "Other State Agencies", including: A-2; A-4; C-21; A-22; A-31; A-55	A-5 (has a grant program but not implementing projects); A-10; A-35 (has funding programs)	A-42
Oregon Dept. of State Lands (DSL)	A-55	A-53; A-54	See actions for "Other State Agencies", including: A-2; A-4; C-21; A-22; A-31	A-53	A-54; A-55
Oregon Dept. of Transportation (ODOT)	B-47	B-47	See actions for "Other State Agencies", including: A-2; A-4; C-21; A-22; A-31; A-55		
Oregon Health Authority (OHA)	A-1h; B-1i; A-1j; A-2; C-9; A-12; A-13; A-17; A-18; A-22; B-26; B-36	B-23; B-39	See actions for "Other State Agencies", including: A-4; C-21; A-31; A-55	A-12; A-13; A-17; A-18; A-44	
Oregon Invasive Species Council		B-56			
Oregon Parks and Recreation Department	A-54; A-55		See actions for "Other State Agencies", including: A-2; A-4; C-21; A-22; A-31	B-56	
Oregon State University (OSU)	C-27; C-43	B-24		A-2; B-3; A-4; A-42	
Oregon State University (OSU) Extension Service	A-1; A-1g; A-1h; A-1j; B-1i; B-1k; C-34; B-36	B-39; A-50		A-1g; A-1h; B-39	
Oregon Water Resources Dept. (OWRD)	A-1; A-1f; A-1g; B-15; A-16; A-17; A-22; C-27; B-52; A-54; A-55; A-59	A-1a; A-1b; A-2; B-7; B-14; A-10; A-19; C-20; B-23; B-24; B-26; C-32; C-34; B-39; A-42; C-43; B-48; A-53; A-55	See actions for "Other State Agencies", including: A-4; C-21; A-31	A-1f; A-22	1g; A-16 (has funding but is not a lead); A-17 (not involved with water quality); A-19
Oregon Watershed Enhancement Board (OWEB)	A-16; A-59	A-19; A-44; A-50; A-55; A-58; A-59			
Regional Solutions (South Valley / Mid-Coast Region)	A-2				
Rural Community Assistance Corporation		C-1d; A-2			

Potential Leads and Participants Table

Potential Lead & Participants	Lead on Action #s (Prioritization - Action #)	Participant for Action #s	Other Potential Action #s	Actions Being Implemented by Lead or Participant	Gaps Identified So Far (Priority A Only)
Salmon Safe		A-44			
Salmon-Drift Creek Watershed Council	A-44; B-45; B-47; A-51; A-53; A-58	A-19; B-47; B-52; A-54	See actions for "Watershed Councils and Groups" and "MidCoast Watersheds Council", including: A-1; A-1g; A-16; A-17; A-31; A-41; A-46; B-48; A-49; A-50; A-55; B-56; A-59	Merged with MidCoast Watersheds Council	
Samaritan Health Education		A-1j			
Samaritan Hospital		C-1e			
The Nature Conservancy	A-41			A-44; B-45; A-46; A-49; A-50	
U.S. Bureau of Land Management (BLM)	A-40; A-44; B-48; A-49; A-50; A-51; A-53; A-58		See actions for "Other Federal Agencies" and "Landowners / Land Managers", including: A-16; C-21; A-22; A-31; B-38; B-45; A-46; B-47	A-40; A-44; B-45; A-46; A-49; A-50; A-51; A-53	A-58
U.S. Department of Agriculture (USDA) Natural Resources Conservation Service	B-1k; C-25; A-58	C-34	See actions for "Other Federal Agencies", including: C-21; A-31; A-40	A-1g	
U.S. Environmental Protection Agency (EPA)		A-2; B-26; A-59	See actions for "Other Federal Agencies", including: C-21; A-31; A-40	A-2	
U.S. Forest Service (USFS)	A-17; A-18; A-40; A-44; B-45; B-48; A-49; A-50; A-51; A-53; C-57; A-58; A-59	A-5; A-19; B-39; A-46; B;47	See actions for "Other Federal Agencies" and "Landowners / Land Managers", including: B-1k; A-16; C-21; A-22; A-31; B-38	A-44; B-45; A-46; A-49; A-50; B-56	
U.S. Geological Survey (USGS)	A-16	A-31; A-44; A-51; A-53; A-59	See actions for "Other Federal Agencies", including: C-21; A-40		
Water Reuse (waterreuse.org)		B-23			
Wetlands Conservancy	A-41			A-41; A-58	
Wild Salmon Center		B-52		A-17; A-44; A-50; A-51; B-52; A-54; A-55	
Projects with Leads or Participants NOT Identified in Action Plan					
Lincoln County Parks (Siletz Source Water Monitoring Project)				A-17	
Water Watch of Oregon (50-Year Water Supply Plan)				A-2; B-3; A-4; A-42	
U.S. Fish and Wildlife Services (USFWS)				A-44; B-45; A-46; A-49; A-50	
Pacific States Marine Fisheries Commission				A-49	

Smartsheet Project Database and Management Tool

To track and manage implementation of the Water Action Plan, information about projects has been compiled in a Smartsheet online project database. The Smartsheet system facilitates tracking of project information, such as implementing entities, project descriptions, associated actions in the Water Action Plan, funding information, and timelines. The Smartsheet workspace is made available to MCWPP members for editing and adding new projects upon request, and project information can also be submitted via a form. The Smartsheet database can be used in several ways:

- Tracking implementation of actions by project
- Coordinating and forging additional partnerships with entities working on similar projects or in the same area
- Viewing a dashboard showing metrics, such as project funding sources and active project participants
- Reporting on implementation of the Water Action Plan

Bundle Work Plans

Using the Water Action Plan Bundled Actions document, Work Groups were convened to focus on developing more specific work plans for the related actions in individual bundles. Each Bundle Work Plan sketches out potential next steps for making progress in implementing the included actions. The work plans outline the activities needed to support existing projects, activities to address Priority Group A actions that are not yet being implemented or have few associated projects, and a description of any committees recommended or other infrastructure needed to support implementation.

Early Implementation Work Plan Schedule

To help maintain momentum of the Partnership’s efforts to support implementation of actions in the Water Action Plan, the following schedule has identified activities for the Partnership in 2025. The outcome of activities in 2025, such as applying for Partnership capacity funding, will help guide activities in subsequent years.

Estimated Schedule of Potential Partnership Activities

Month	Potential Activities
January	<ul style="list-style-type: none"> • Coordinating Committee meeting • Funding Committee meeting <ul style="list-style-type: none"> ○ Develop grant application
February	<ul style="list-style-type: none"> • Coordinating Committee meeting • Funding Committee meeting <ul style="list-style-type: none"> ○ Develop grant application
March	<ul style="list-style-type: none"> • Coordinating Committee meeting • Funding Committee meeting

Month	Potential Activities
	<ul style="list-style-type: none"> ○ Develop grant application ● Project Support Committee meeting <ul style="list-style-type: none"> ○ Develop an approach for supporting one or more priority actions that do not have any projects and/or leads ○ Identify ways that the Partnership can support any project forwarded from the Coordinating Committee for Partnership support
April	<ul style="list-style-type: none"> ● Coordinating Committee meeting ● Funding Committee meeting <ul style="list-style-type: none"> ○ Develop grant application ● Partnership meeting <ul style="list-style-type: none"> ○ Discuss funding pursuits and needs ○ Discuss priority actions that need leads and/or other assistance from the Partnership to advance ○ Share efforts to implement actions in the Water Action Plan
May	<ul style="list-style-type: none"> ● Submit an OWEB Partnership Capacity grant application ● Coordinating Committee meeting
June	<ul style="list-style-type: none"> ● Coordinating Committee meeting ● Funding Committee meeting ● Project Support Committee meeting <ul style="list-style-type: none"> ○ Discuss the progress of efforts to support one or more priority actions that do not have any projects and/or leads ○ Identify ways that the Partnership can support any project forwarded from the Coordinating Committee for Partnership support
July	<ul style="list-style-type: none"> ● Coordinating Committee meeting ● Funding Committee meeting
August	<ul style="list-style-type: none"> ● Coordinating Committee meeting ● Funding Committee meeting
September	<ul style="list-style-type: none"> ● Coordinating Committee meeting ● Funding Committee meeting ● Project Support Committee meeting <ul style="list-style-type: none"> ○ Discuss the progress of efforts to support one or more priority actions that do not have any projects and/or leads ○ Identify ways that the Partnership can support any project forwarded from the Coordinating Committee for Partnership support
October	<ul style="list-style-type: none"> ● Coordinating Committee meeting

Month	Potential Activities
	<ul style="list-style-type: none"> • Partnership meeting <ul style="list-style-type: none"> ○ Discuss funding pursuits and needs ○ Discuss priority actions that need leads and/or other assistance from the Partnership to advance ○ Share efforts to implement actions in the Water Action Plan
November	<ul style="list-style-type: none"> • Coordinating Committee meeting
December	<ul style="list-style-type: none"> • Coordinating Committee meeting • Project Support Committee meeting <ul style="list-style-type: none"> ○ Discuss the progress of efforts to support one or more priority actions that do not have any projects and/or leads ○ Identify ways that the Partnership can support any project forwarded from the Coordinating Committee for Partnership support

Updated Partnership Charter

The Partnership operates under a Charter that defines the group’s purpose and goals and describes how the members have agreed to work together. The Charter was last revised in May 2018. The Partnership’s Coordinating Committee is tasked with periodically reviewing the Charter and proposing modifications for the benefit of the Partnership and its mission. The Coordinating Committee, facilitated by GSI, identified portions of the Charter that could benefit from revisions, such as describing implementation support following approval of the Water Action Plan. In [date], the Partnership approved updates to the Charter through a consensus decision. *[A consensus decision of the Partnership at the fall 2024 meeting will be needed to adopt the proposed revisions.]* The updated Partnership Charter, included in [ATTACHMENT B](#), provides guidance on how the Partnership can work together in the coming years to support implementation of actions in the Water Action Plan.



Attachment A

PRIORITIZATION PROCESS AND RESULTS

Mid-Coast Water Planning Partnership

Funding for the Prioritization Project and Early Implementation Work Plan was provided by the Oregon Water Resources Department through an American Rescue Plan Act (ARPA) grant.



August 2024

Prioritization Process and Results

The Mid-Coast Water Planning Partnership's (Partnership) Water Action Plan was adopted by consensus of the Partnership on May 11, 2022 and was formally recognized by the Oregon Water Resources Commission on June 16, 2022. The Water Action Plan includes a list of 59 actions (some with sub-items) organized into eight Imperatives, or broad categories of related actions. No further prioritization occurred during the planning process. All 59 of the actions are considered necessary to achieving the Partnership's goals of supporting integrated water resources planning that benefits the region's ecosystems, economies, and communities; however, recognizing resource constraints, the Partnership undertook a prioritization process in 2023-2024 to help guide implementation.

Prioritization Process

A Prioritization Work Group was convened and developed a decision-support system (i.e., scoresheet method) during spring and early summer 2023. The Work Group then met approximately monthly from August 2023 through January 2024 to score actions using the decision-support system. The decision-support system used high (3), medium (2), and low (1) scoring criteria for water quality, water quantity, stakeholder understanding, and implementation readiness. Additional scoring criteria included instream and out-of-stream benefits, regionwide benefits, and consistency with State and regional plans using yes (1) or no (zero) scoring.

The Prioritization Work Group calculated the scores for each action and then used the scores to categorize actions under one of the following Priority Groups: A (highest priority), B (middle priority), and C (lowest priority). Scores were only compared within imperatives, not across imperatives. Imperatives 5 (Resilient Water Infrastructure) and 7 (Planning for Water Supply Development Needs) were combined for Priority Groups due to their similarities. The Prioritization Work Group reviewed the Priority Group of each action based on initial scores and moved a few actions into different Priority Groups.

Exhibit 1 presents a list of individuals who participated in Work Group meetings and their affiliations.

Exhibit 1. Participants in the Prioritization Work Group meetings and their affiliations.

Name	Affiliation
Caylin Barter	Wild Salmon Center
Mike Broili	MidCoast Watersheds Council
Christine Clapp	Oregon Department of Fish and Wildlife
Tyler Clouse	Lincoln Soil and Water Conservation District
Adam Denlinger	Seal Rock Water District; Partnership Convener
Paul Engelmeyer	MidCoast Watersheds Council, Audubon Society
Alan Fujishin	Gibson Farms
Evan Hayduk	MidCoast Watersheds Council
Phebe Howe	Oregon Health Authority
Tatyana Isupov	Oregon Department of Environmental Quality
Olivia Jasper	Oregon Department of Agriculture
Kacey Largent	US Forest Service
Bill Montgomery	MidCoast Watersheds Council
Alyssa Mucken	Oregon Water Resources Department
Steve Parrett	Oregon Department of Environmental Quality
Clare Paul	City of Newport
Henry Pitts	Oregon State University student
Fran Recht	Pacific States Marine Fisheries Commission
Mark River	Weyerhaeuser Hydrologist
David Rupp	Oregon State University
Alexandria Scott	Lincoln County resident
Billie Jo Smith	Lincoln County Water Systems Alliance
Janna Stevens	Oregon Department of Fish and Wildlife
Steve Stewart	City of Newport
Andrea Sumerau	Confederated Tribes of Siletz Indians
Matt Thomas	Oregon Department of Forestry
Margaret Treadwell	McKenzie River Trust
Kimberly Wollenburg	City of Depoe Bay
Bradley Wynn	Seal Rock Water District

Results of the Prioritization

The Work Group’s proposed prioritization was presented at a meeting of the full Partnership on May 29, 2024. After a group discussion and minor revisions, the Partnership adopted the prioritized list of actions as shown in the attached Prioritization Groups Summary table. The prioritization will be used to guide how Partnership resources (e.g., time and money) are allocated to support action implementation efforts. For example, if there are five actions that are not currently being implemented, the Partnership would begin supporting early implementation steps of Priority Group A actions out of that group of five actions.

MCWPP Water Action Plan Prioritization Groups Summary

Imperative	Action #	Action Description	Total Score	Priority Group
1	1	Develop and implement a public awareness and engagement campaign aimed at supporting the imperatives and actions in the Mid-Coast Water Action Plan, including raising awareness and understanding of regional water issues.	14	A
1	1b	Develop drought declaration and audience-specific (e.g., self-supplied industrial water users) water conservation and curtailment messages.	14	A
1	1g	Conduct outreach to encourage implementation of voluntary, incentive-based actions throughout the region, consistent with existing plans, such as the Mid-Coast Agricultural Water Quality Management Area Plan.	14	A
1	1a	Promote water conservation at local events, on the Mid-Coast Water Planning Partnership website and the websites of regional partners and entities, in news articles, in water bills, via social media, and through outreach materials to businesses, particularly in the hospitality industry.	13	A
1	1f	Identify or develop curriculum and materials/information for students and the public (community education) about their water sources, water management, and water conservation.	13	A
1	1h	Inform self-supplied and public water users and residents and businesses within public water supply areas about water supplies and water protection measures, including proper well construction and maintenance, septic system maintenance, and proper use of landscape and other chemicals.	13	A
1	1j	Conduct education in source water areas (including to those that may not be customers of the water provider) about drinking water sources, risks, choices, and strategies.	13	A
1	1i	Work with partners and agencies (e.g., Oregon State University Extension Service) to deliver information on safe pesticide application practices and vegetation management practices that reduce or eliminate pesticide use. Provide outreach on water quality impacts of pesticides and fertilizers associated with lawn management near streams and ponds. Share methods that reduce impacts and identify alternatives.	12	B
1	1k	Connect private landowners with resources and information about best management practices to improve water quality and quantity.	12	B
1	1c	Coordinate watershed and water system tours to increase awareness and understanding of regional and local water issues.	11	C

Imperative	Action #	Action Description	Total Score	Priority Group
1	1d	Develop a regional initiative/training to improve coordination and provide education to water providers on infrastructure financing and funding.	10	C
1	1e	Provide an internship program, hands-on training, and certification training for water technicians, which includes technician training on updating and implementing water management.	10	C
2	2	Support the creation of a feasible 50-year county-wide water supply plan. Incorporate regionally integrated plans that improve water system resiliency and adequately plan for future water supply development in the face of natural and human-caused disasters.	15	A
2	4	Strengthen/support the Mid-Coast Water Conservation Consortium to enhance water conservation, increase resiliency during shortages and emergencies, and pool resources of multiple water providers. Support enhanced coordination with state and federal entities outside of the Mid-Coast.	14	A
2	5	Support and advocate for planning and development that minimizes impacts to floodplains and riparian areas, promoting Green Infrastructure (GI) methods and Low Impact Development (LID) practices.	14	A
2	10	Collaborate with emergency operations planners to identify highest priority water needs and develop alternative systems and plans. Identify opportunities and access for shared water available for addressing emergency interconnections.	13	A
2	12	Develop regionally integrated Drinking Water Protection Plans to ensure that strategies and implementation plans are in place to minimize threats to water supply sources throughout the Mid-Coast. Advocate for funding to support the development and plan implementation.	13	A
2	13	Create a Source Water Protection Plan, or multiple source-specific plans, to reduce, or minimize contaminants from entering source waters. Advocate for funding to support the development and implementation of these plans.	13	A
2	3	Support the development of organizational procedures for the Mid-Coast Water Conservation Consortium (MCWCC) and the Lincoln County Water Systems Alliance (LCWSA) that will facilitate the prioritization and funding of projects throughout the region.	13	B
2	7	Coordinate water curtailment plans among water providers.	13	B
2	6	Develop and update water management and conservation plans for the Mid-Coast regional municipal and self-supplied direct water systems.	12	C

Imperative	Action #	Action Description	Total Score	Priority Group
2	8	Encourage municipalities to update/complete required stormwater management control plans to incorporate GI/LID practices, using statewide LID technical design guide, and update codes and ordinances that are barriers to implementing these practices. Assist smaller communities, that are not currently required, in voluntarily developing similar stormwater management plans and technical design guides.	12	C
2	9	Advocate for Emergency Response Plans (required for public water systems) address water system needs and specific vulnerabilities and are interconnected to create a regional network during emergency situations.	12	C
2	11	Support the development of tiered communication trees to address: a) typical support needs b) response to localized emergencies affecting one or multiple Public Water Systems; and c) Cascadia Subduction Zone quake, volcanic eruption, regional wildfire. Provide communication alternatives for inoperable phone/internet (HAM resources; meeting locations and days/times).	11	C
3	16	Fully fund, install, and monitor real-time stream gauging stations throughout region in priority locations and times of year when they are needed most to accurately assess source water and enable innovative demand-reduction actions during periods of critical ecological need.	14	A
3	19	Develop a coordinated network of people conducting stream flow monitoring and water quality monitoring to share resources and data. Explore cost-effective ways to incorporate volunteers in data collection to complement gauging network.	14	A
3	17	Develop and implement a coordinated long-term water quality monitoring program throughout the region (e.g., source water, streams, estuaries) to improve understanding of current conditions and event-caused conditions (i.e., storm, low-flow) for nutrients, bacteria, temperature, dissolved oxygen, pH, turbidity and other specific contaminants identified by DEQ, including those that contribute to harmful algal blooms (HAB)s. Collect water samples to identify pollutant sources (location, source, practices influencing input, transport and fate of pollutants). Advocate for additional sampling in headwaters (where herbicides and pesticides are applied) and at municipality intakes.	13	A
3	18	Conduct comprehensive and ongoing water testing, and use results to guide best management practice implementation, restoration, etc. to address water quality impairments.	13	A
3	14	Implement more efficient advanced metering infrastructure to enable faster identification of leaks and shortages, and support best practices for water providers to meet industry standards for documenting water loss.	12	B

Imperative	Action #	Action Description	Total Score	Priority Group
3	15	Recommend installation and use of flow meters to gain a more accurate estimate of water use in the region.	12	B
3	21	Develop a water monitoring database for data entry and access by multiple entities.	11	C
3	20	Support the aggregation and update of current self-supplied water system databases, including system description, system status, and system needs. Determine what exists from current databases. Track wells going dry via self-reporting.	10	C
4	22	Improve understanding of Oregon’s existing water reuse regulations, and the opportunities and barriers (e.g., health issues) to using recycled and gray water for all allowed uses. Encourage development of comprehensive water reuse programs at appropriate scales.	14	A
4	24	a) Incentivize commercial and industrial facilities to conduct water audits, identifying water loss and implementing conservation, recycling, and re-use strategies and technologies. b) Evaluate and potentially revise water pricing strategies commensurate with actual delivery costs as well as other strategies to stimulate water conservation and re-use while raising revenue for water conservation investments (e.g., improved efficiency at commercial facilities).	13	B
4	26	Identify and develop voluntary incentives for water conservation.	13	B
4	23	Investigate and share information on methods of reusing treated sewage plant water and water at water treatment plants (e.g., backwash) and regional industries for potable, agricultural, and industrial uses.	12	B
4	25	Work with the NRCS to develop a Conservation Implementation Strategy to provide incentives and technical support to agricultural irrigators interested in making improvements, such as increased efficiencies to minimize evaporation losses.	10	C
4	27/43	Using the Water Management Economic Assessment Model, develop a suite of adaptation measures (e.g., storage investments, conservation rebate programs, and new pricing models) to address existing and predicted water shortages in the region.	9	C
7	27/43	Using the Water Management Economic Assessment Model, develop a suite of adaptation measures (e.g., storage investments, conservation rebate programs, and new pricing models) to address existing and predicted water shortages in the region.	9	C

Imperative	Action #	Action Description	Total Score	Priority Group
5	31	Evaluate alternatives for both natural and built (human-made) water storage with the planning area. For built systems, identify and perform feasibility studies needed to assess whether projects are viable using established and agreed-upon criteria (economic, environmental, regulatory, etc.). For natural storage “systems”, identify feasibility studies needed to assess project viability using established and agreed-upon criteria. For those that appear viable, developed estimates of seasonal water storage and release.	13	A
7	42	Seek additional and alternative sources of water for development in the region.	13	A
5	28	Support upgrading and maintaining water metering system infrastructure, where possible. Note: Automated read systems (not SMART) can be installed at reduced cost.	12	A
5	33	Identify funding programs to support infrastructure enhancements that advance sustainable and secure water solutions for the region. Study how other cities and counties have funded their infrastructure improvements through time and manage water infrastructure assets.	10	B
5	29	Use the latest technologies (e.g., In system monitoring and controls, pumping efficiency, automating, and controlling potential zone isolations) available when retrofitting, or replacing, water infrastructure.	9	C
5	30	Address distribution system failures by installing earthquake valves in water tanks to retain water even if distribution system fails.	9	C
5	32	Support the expansion of the state-supported revolving fund (including developing a new fund for self-suppliers) to accelerate water infrastructure improvements. Improve access to funding by enhancing coordination and collaboration with communities).	9	C
5	34	Establish a community revolving loan program for infrastructure improvements for septic systems.	9	C
6	41	Protect critical lands within drinking water source areas through acquisition, conservation easements, or other tools that prevent degradation and/or impacts to source water quality.	14	A
6	35	Identify, fund, and implement high-priority regional source water protection activities.	13	A
6	40	Furthering a working lands concept, advocate for incentives, and other strategies, that promote silvicultural practices that support restoration of watershed ecological function and protect drinking water source areas.	13	A

Imperative	Action #	Action Description	Total Score	Priority Group
6	36	Support the reduction of nutrient, turbidity, and bacteria inputs and emerging contaminants of concern (e.g., PFAS, PFOA, PFOS, pharmaceuticals, etc.) to source water from all sectors using the latest technology.	13	B
6	38	Assess and evaluate harmful algal bloom events that affect source water to identify potential contributing sources, and educate and support the reduction of nutrient inputs to source water from all sectors to prevent algal blooms (e.g., promote agricultural nutrient management plans, grants to reduce inputs, well water nitrate screening, well water and septic system education, low-input gardening).	13	B
6	39	Advocate for integrated pest management (e.g., minimize aerial spraying in watersheds adjacent to source water; promote hand clearing in riparian zones (versus hand spraying); support notification of all water treatment facilities when and where spraying will occur), as well as notification of downstream water users who are not on municipal water systems and rely on source water for domestic use.	13	B
6	37	Enhance contamination prevention measures for reservoirs, surface water intakes, springs, and/or wellheads.	9	C
8	44	Support restoration projects that involve diverse landowners and land management goals in locations that will achieve the greatest ecological returns on investment (e.g., cooler streams and improved summertime flows for sensitive species and to address water quality impairments).	15	A
8	54	Determine ecological flows (seasonally varying flow targets and temperature-based flow targets), and identify basin-wide in-stream demands. Support development of additional instream water rights. Implement flow restoration efforts in high priority areas as determined by Instream Water Right Monitoring and other means (e.g., ODFW's Aquatic Habitat Prioritization).	15	A
8	55	Use established voluntary programs, or other tools, to convert existing water rights (e.g., irrigation, commercial use, other out-of-stream uses) to instream uses that protect critical flows needed to support fish and wildlife, water quality, recreation, and scenic attraction.	15	A

Imperative	Action #	Action Description	Total Score	Priority Group
8	59	Support and advocate for the compilation of a hierarchy of necessary spatial analyses and modeling to determine which conservation strategies, and locations on the landscape, will result in the greatest environmental returns on investment (ROI) (e.g., ecological function) and achieve the highest priorities in existing species recovery plans (e.g., improving winter and summer rearing habitats). Advocate for implementation of strategies in federal Coho recovery plan and Oregon coast Coho Conservation Plan (OWEB FIP Framework).	15	A
8	46	Advocate for the restoration and conservation of native riparian vegetation to facilitate large natural wood recruitment, maintain water quality, ensure ecological function, and produce habitat for aquatic species, including beavers.	14	A
8	49	Protect beaver populations and encourage beaver pond creation, especially in critical areas with low summer flows.	14	A
8	50	Design and implement restoration projects with partners to directly address impairments and improve conditions (e.g., erosion prevention and control, riparian and wetland buffers, urban tree protection).	14	A
8	51	Evaluate the mechanisms and conditions for restoring hyporheic flows (the transport of surface water through sediments in flow paths that return to surface water) in the Mid-Coast using a suite of strategies (articulated in the Oregon Plan and other plans).	14	A
8	53	Support projects that result in increased water retention capacity in channels, floodplains, and adjacent uplands and wetlands using a variety of strategies.	14	A
8	58	Acquire land, or obtain conservation easements, to protect critical land areas managed for water quality protection.	14	A
8	45	Use established methods (e.g., field assessment, remote sensing, and physical models, such as Heat Source) and local knowledge to prioritize stream reaches for riparian buffer restoration projects. Increase wooded buffer zones on priority streams.	13	B
8	52	Recommend limits on further appropriation of water on high priority streams where water is not available for meeting aquatic life needs.	13	B
8	56	Identify priority invasive species in each watershed, and seek funding to support control and management of invasives in streams and along stream corridors while encouraging establishment of native vegetation.	13	B
8	47	Implement more erosion control practices.	12	B

Imperative	Action #	Action Description	Total Score	Priority Group
8	48	Evaluate anthropogenic sources of fine sediment from all land uses, including mass wasting and unsurfaced roads. Seek funding opportunities to reduce shallow landslide risk and other sediment delivery hazards (e.g., undersized culverts, outdated road maintenance, legacy roads) and perform road upgrades, repair, and decommissioning.	12	B
8	57	Advocate for implementation of the Lincoln County Multi-Jurisdictional Natural Hazard Mitigation Plan, especially as it relates to wildfire mitigation in the Mid-Coast.	11	C



Attachment B

CHARTER

Mid-Coast Water Planning Partnership

Funding for the Prioritization Project and Early Implementation Work Plan was provided by the Oregon Water Resources Department through an American Rescue Plan Act (ARPA) grant.



Revised XXX 2024