

Yachats Drinking Water Protection Plan and Implementation

MCWPP Meeting
November 16, 2023

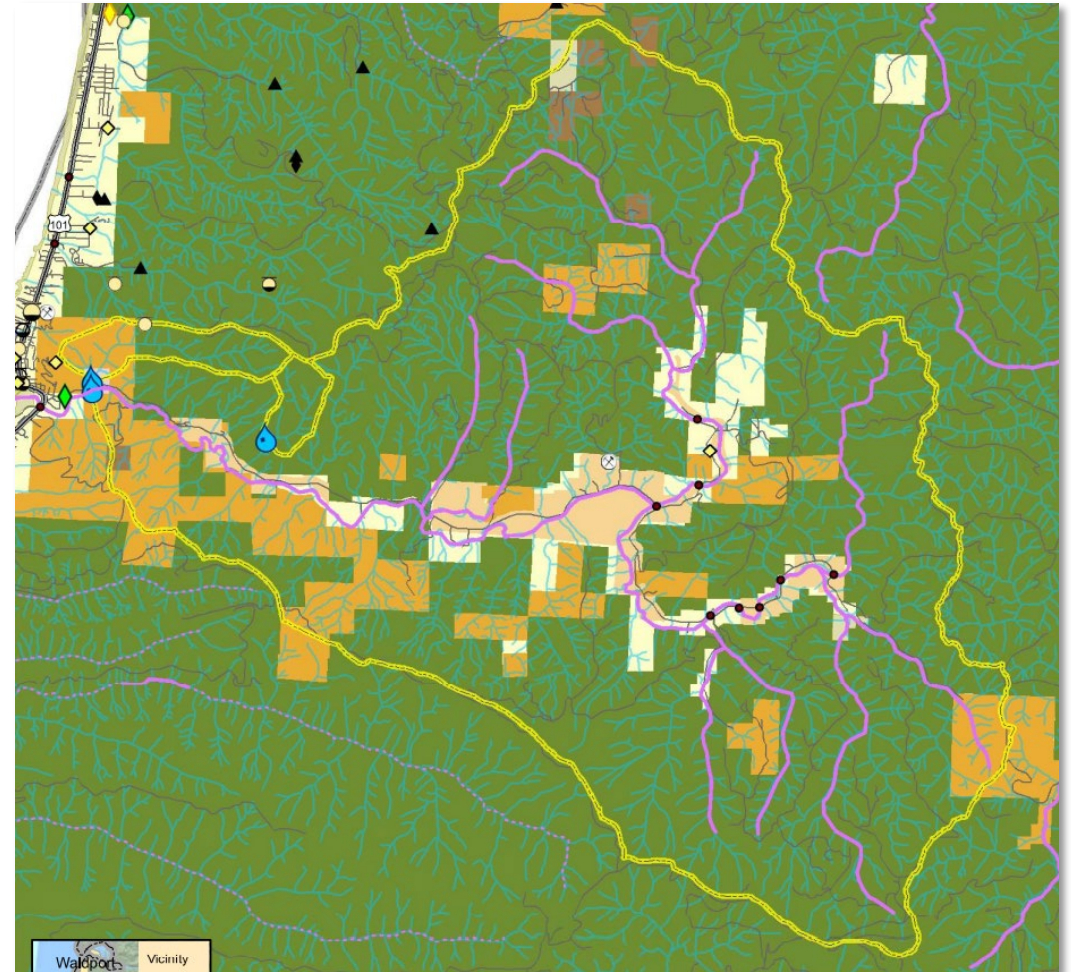


Agenda

- Need for drinking water protection
- Development of DWPP
- Implementation of DWPP

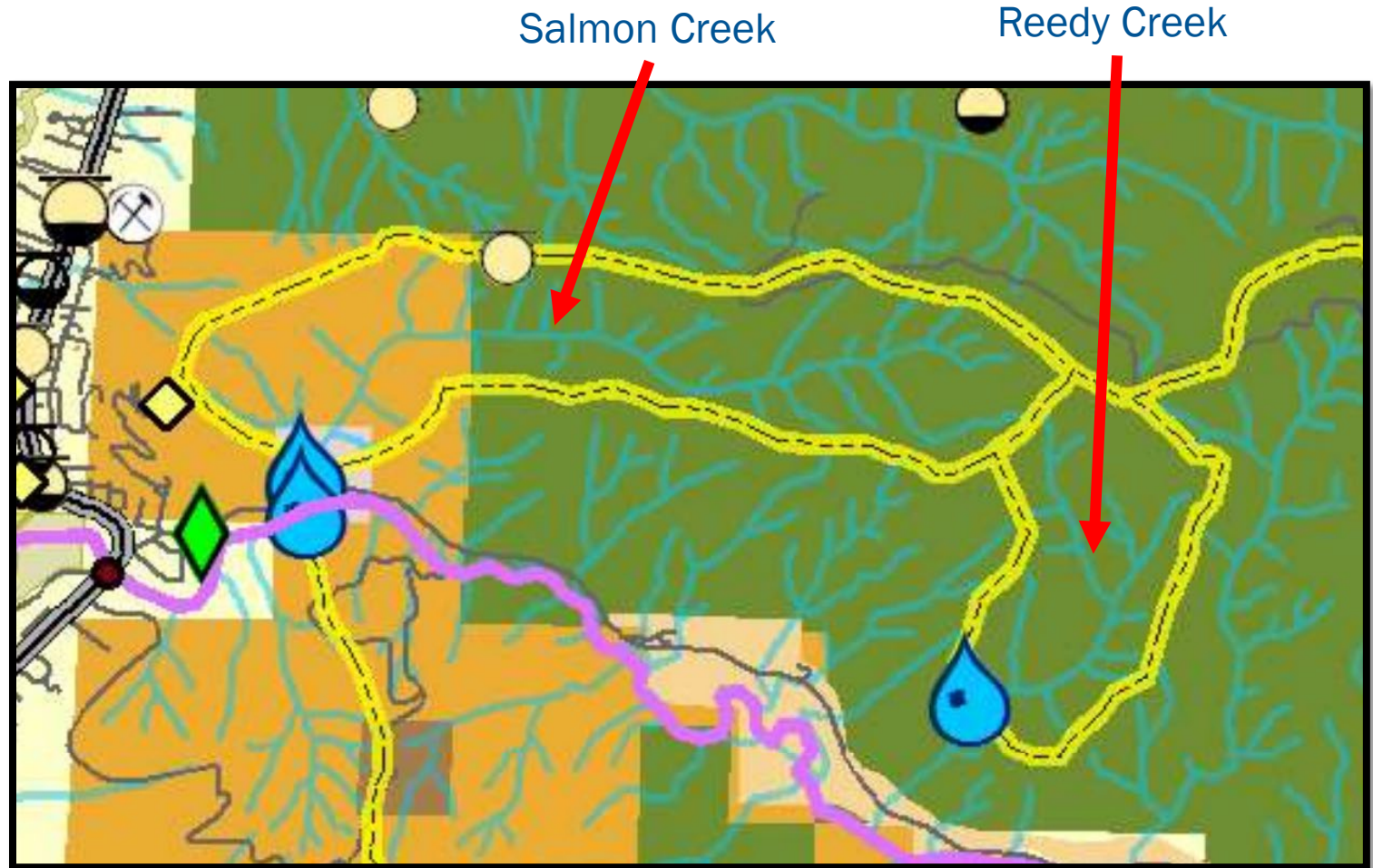
Current Drinking Water Sources

- Tributaries to Yachats River
 - Reedy Creek
 - Primary water supply
 - Salmon Creek
 - Secondary supply during summer low flows



Drinking Water Sources

- Reedy Creek
 - US Forest Service
- Salmon Creek
 - USFS headwaters
 - Private forestry
 - City lands



Need for Drinking Water Protection

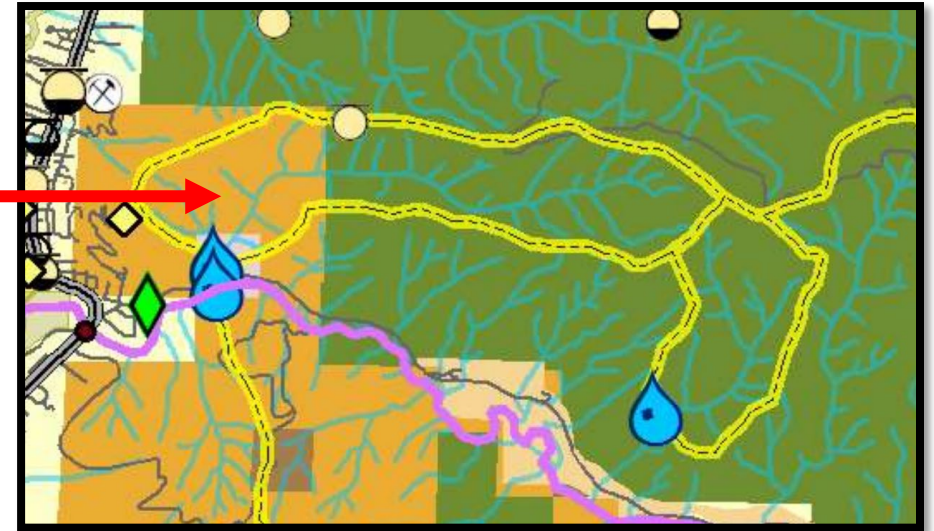
Water quantity

- Low summer streamflow
- Tourism and seasonal residents
- Flows for fish

Water quality

- Turbidity
- Chemical contaminants

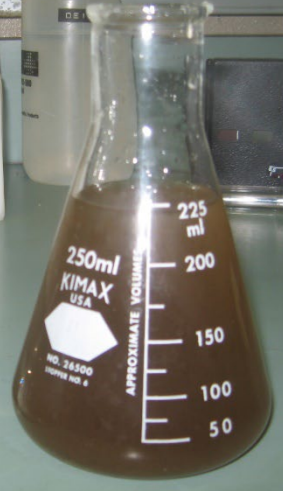
Need for Drinking Water Protection





Reedy Creek
3 NTU

Salmon Creek
1000+ NTU

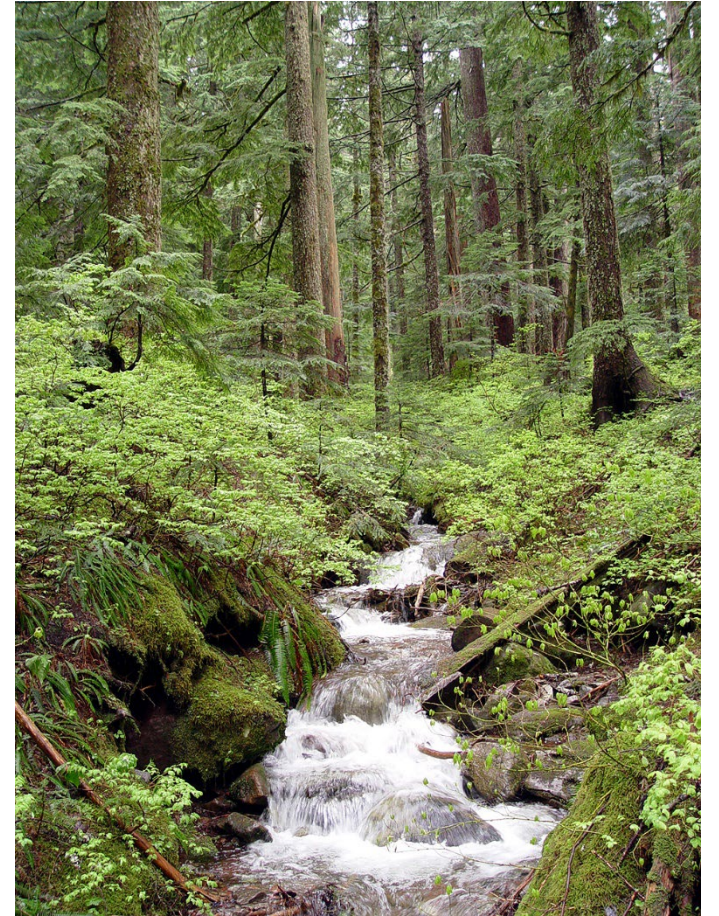


Water Plant



Developing a DWPP

- DEQ recommended developing a DWPP
- Grant from OHA in 2019
- DWPP development 2020-2021
 - Source Water Assessment
 - Stakeholder team and public engagement



DWPP Team

- Over 20 members
- Local residents and organizations
- Technical expertise from agencies
- Conservation groups



DWPP Components

Risk assessment

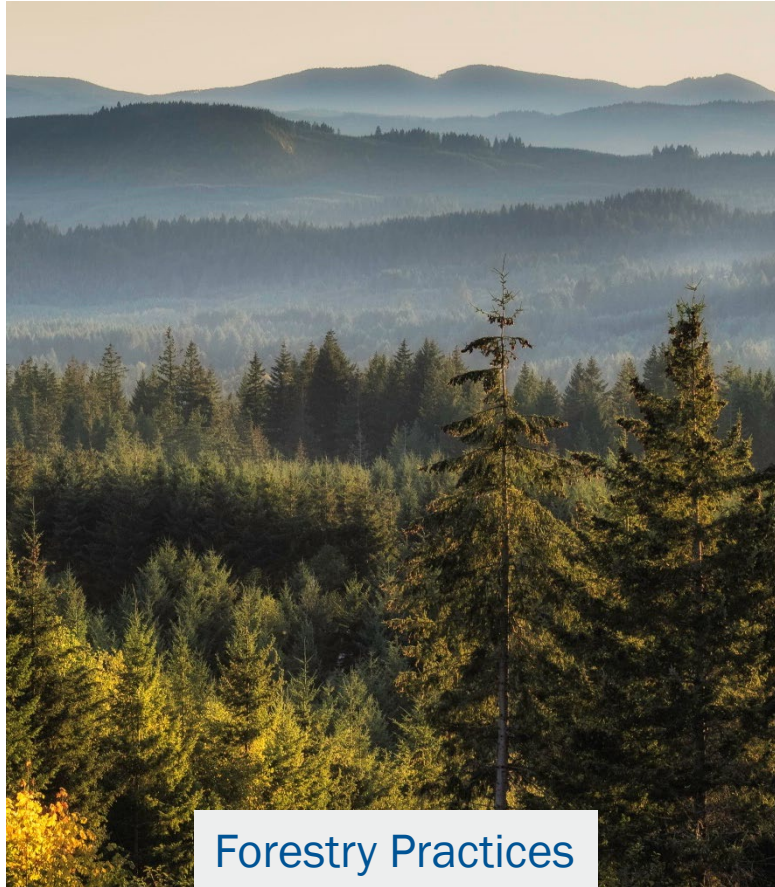
Strategies

Implementation plan

Contingency plan

Future water sources

Identifying and Prioritizing Risks



Strategies to Address Risks

Communications
and advocacy

Public education
and technical
assistance

Critical area
protection

Municipal
policies and
infrastructure
management

Plan and
program
development

Monitoring
programs

Contamination
prevention

Watershed
restoration
support

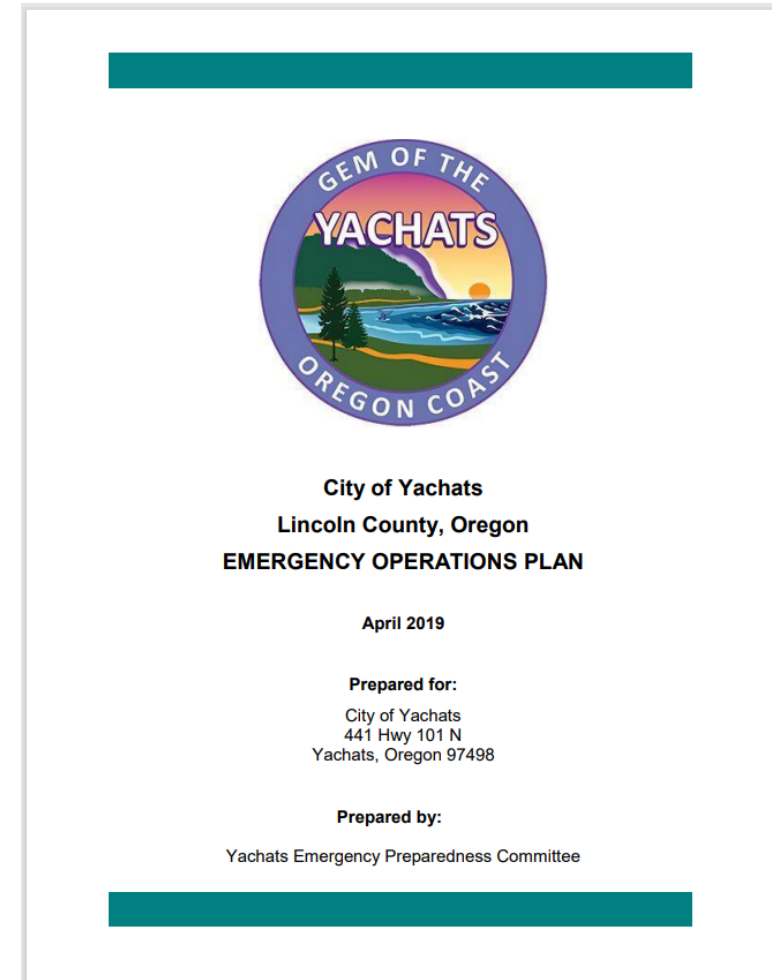
Implementation Plan

- Activities to implement strategies
- Five fiscal years (emphasis on first two)
- Funding sources
- Potential partners



Contingency Plan

- Short-term and long-term response to loss or reduction of water supply
- Prioritization of water usage
- Incident response
- Curtailment and conservation measures



Future Water Sources

- Yachats River
 - Water right held in reserve
 - Some similar risks, some new risks
 - Agriculture, residential
- Strategies
 - Outreach, septic system and well programs, monitoring, restoration





DWPP Implementation

Plan Approved in 2021!

- Implementation Grant from OHA
 - Education and outreach
 - Water conservation ordinances
 - DWPP monitoring plan



Education and Outreach



Wise use of Yachats' precious water sources is critical and requires your help.

Welcome to the Yachats community. The water supply that we depend on comes from two tributaries of the Yachats River—Reedy Creek and Salmon Creek. Our water sources and their surrounding forests enable our community to thrive.

The City has a Drinking Water Protection Plan to protect water sources, and community participation is needed for the plan to be effective. You can help carry out the goals by conserving water. Here are some water-saving tips you can take:

- Install water-efficient indoor water fixtures, faucet aerators and showerheads.
- Regularly check your water fixtures for leaks.
- If you irrigate, use water-efficient methods and avoid runoff.

Visit the City's website for more information on drinking water conservation, and more!



Help protect our drinking water.

Protecting the City of Yachats' Water Sources, Together

Wise use of our precious water sources is critical and requires your help.

Our Precious Water Sources

The water supply that we depend on comes from two tributaries of the Yachats River—Reedy Creek and Salmon Creek. Without the high-quality water that these creeks provide, our community would not have the ability to thrive.

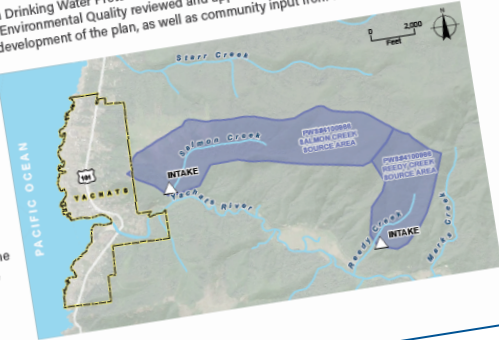
Reedy Creek and Salmon Creek are part of a forest ecosystem that provides the Yachats community with invaluable ecosystem services. These include enhanced water quality, year-round streamflows, and healthy habitat conditions for fish and wildlife. Wise use of our water sources helps protect these ecosystem services and also delays the need to develop new water sources, which is a difficult and costly endeavor. The City of Yachats is working to protect the ecosystem services that help provide us with water through our Drinking Water Protection Plan efforts. The City is in the beginning stages and is looking to Yachats' community members to help carry out the work to be done.

Our Drinking Water Protection Plan

The City of Yachats decided to develop a Drinking Water Protection Plan because it recognizes that protecting its water sources and maintaining healthy watersheds is vital to preserving our precious water now and into the future. Community engagement about local water resources further encouraged the City of Yachats to pursue the plan.

The City of Yachats completed a Drinking Water Protection Plan in 2021, which the Oregon Health Authority and the Oregon Department of Environmental Quality reviewed and approved. A team of local stakeholders and technical advisors guided development of the plan, as well as community input from two public meetings.

The Drinking Water Protection Plan identifies risks to the City's water sources, describes strategies to address those risks, and outlines an implementation plan for those strategies. The Oregon Health Authority provided funding for plan development. Thanks to additional funding from the Oregon Health Authority, the City of Yachats has begun putting the implementation plan into action.



Education and Outreach

- Flyers
 - Residents, landowners, realtors, agencies, other water providers, landscapers, rental property owners
- Postcards
 - Water conservation
- Website content
- Communications guide

Water Conservation Ordinances



Table 1. Maximum Residential Fixture Flow Rates

Fixture	OR Code	EPA WaterSense	Potential Efficiency
Showerheads	2.0 gpm	2.0 gpm	1.25-1.5 gpm
Toilets	1.28 gpf	1.28 gpf	1.28/0.8 gpf**
Bathroom faucets	1.5 gpm	1.5 gpm	0.5-1.0 gpm
Kitchen faucets	1.8 gpm	*	1.5 gpm

gpm = gallons per minute; gpf = gallons per flush

* No EPA WaterSense specification has been developed for kitchen faucets.

** Gallons per flush for dual flush toilet models.



Water Conservation Ordinances

- Reduce pressure on water supplies
- Research other communities' ordinances and codes
- Public meetings
- Indoor conservation
 - State plumbing code and EPA WaterSense
 - Short term rentals
- Outdoor conservation
 - Preventing water waste
 - Water-wise landscape design

Monitoring Plan



Monitoring Plan

- Turbidity
- Temperature
- Streamflow
- Inspections of channel and riparian conditions
- Photo monitoring
- Sampling after storms and forestry activities



Thank you!

Rick McClung
Rick@YachatsMail.org

Suzanne de Szoeki
sdeszoeki@gsiws.com